

IB013

Co-creation process

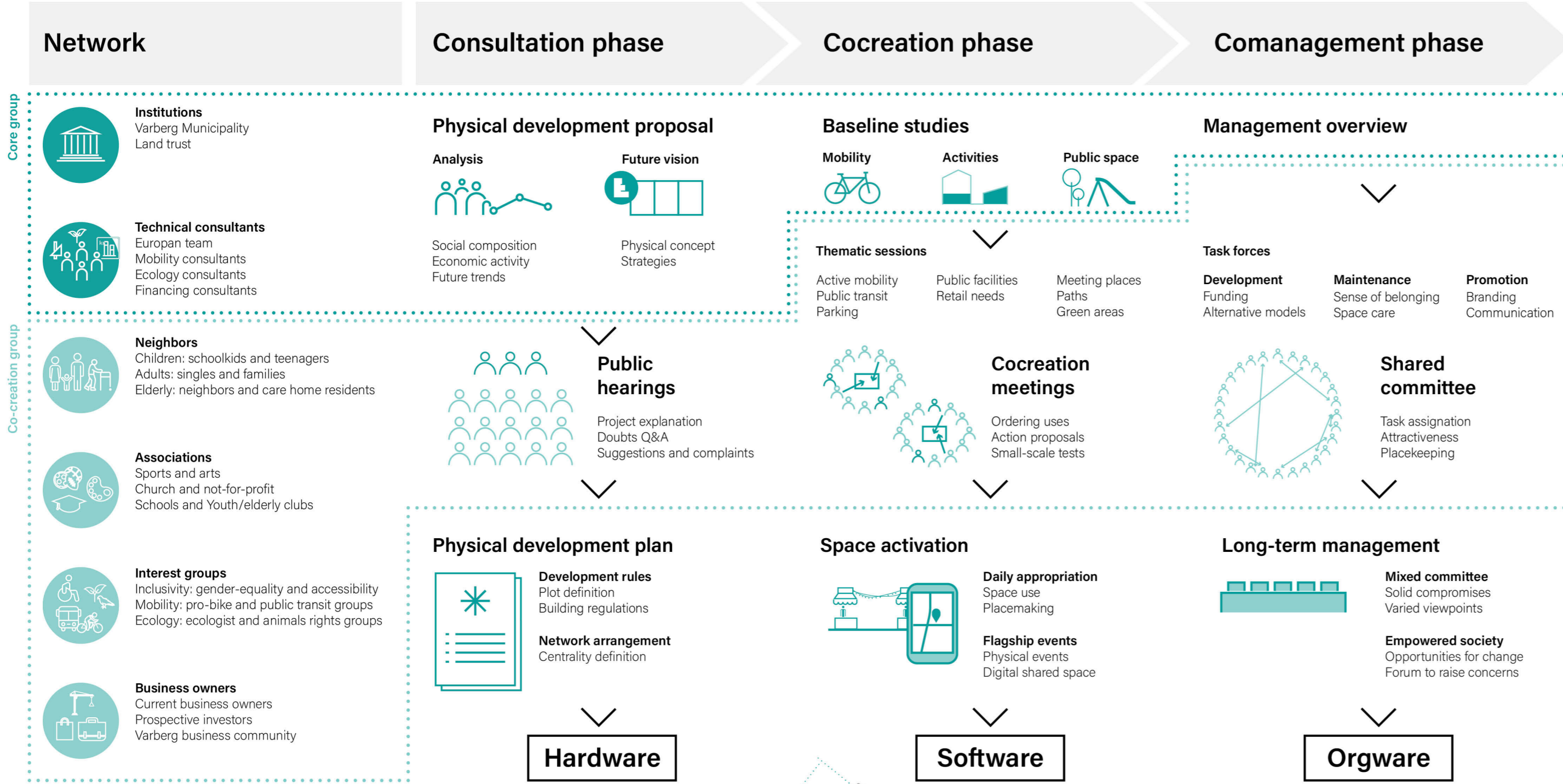
Building a community <=> shaping a place

The process must guarantee that the voices of stakeholders are heard and integrated, while offering a major degree of involvement and responsibility to the public overtime. This will allow to build a place with identity, and create a thriving and collaborative community that will feel the lifeline as their own.

Phasing

A project made of small projects

The transformation of Trädlyckevägen could be done in different phases organized in five main interventions:

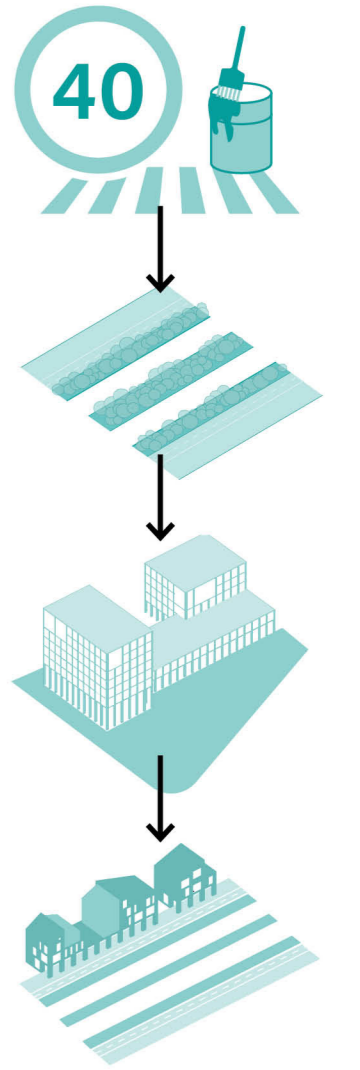


Phase 1. Soft intervention. Tactical urbanism
Traffic calming, multiplication of crossings for pedestrians, narrowing lanes and lowering speed. The results of the participatory process for the renewal of Håstens Torg will be translated into ephemeral interventions in the public space.

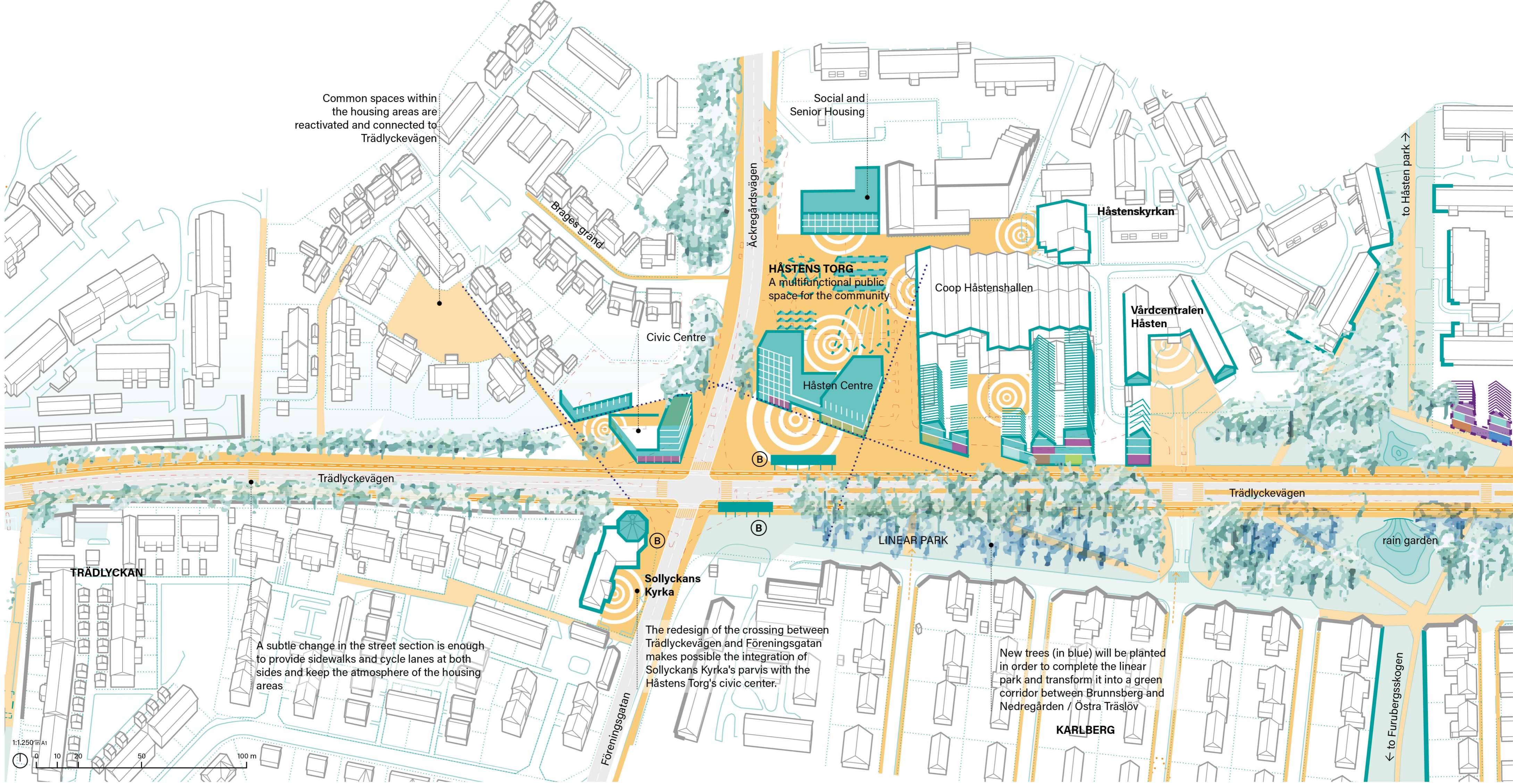
Phase 2. Infrastructure changes
Major works on urbanization are consolidated. New sidewalks, bike lanes, bus stops and water system are built. Roundabouts are transformed into normal ad-grade crossings for pedestrians. The idea is to transform a segregated Trädlyckevägen into a hybrid multi-use street, where people necessarily come together in a pacified environment.

Phase 3. New urban centre
The new centre is aimed at providing new urbanity to Håstens Torg. Along with the co-creation process a multifunctional public space for the community, a new mix-use public facility, new housing and civic centre are erected in this phase.

Phase 4. Street densification
During the last phase of the project new mix-used buildings are build along Håsten neighborhood and other strategical corners. The idea is that new dwellings, shops, storage and productive greenhouses consolidates Trädlyckevägen as the new street



Maximum built area	Maximum built floor	Max. new housing units
12.000 sqm	40.000 sqm	400-500 dwellings
New retail units	Food production (greenhouse)	Lineal park
35 new shops	15Tn groceries/yr	5 Ha



HÅSTENS TORG
New activities and housing
Walkable public realm
Vibrant plaza

Multifunctional public space for the community
Market, fairs, playgrounds and green area

HÅSTEN CENTRE
Mix-use, active ground floor,
Meeting point
Public facilities

LINEAR PARK
More than 6 Ha for biodiversity,
water drainage areas and
leisure activities

