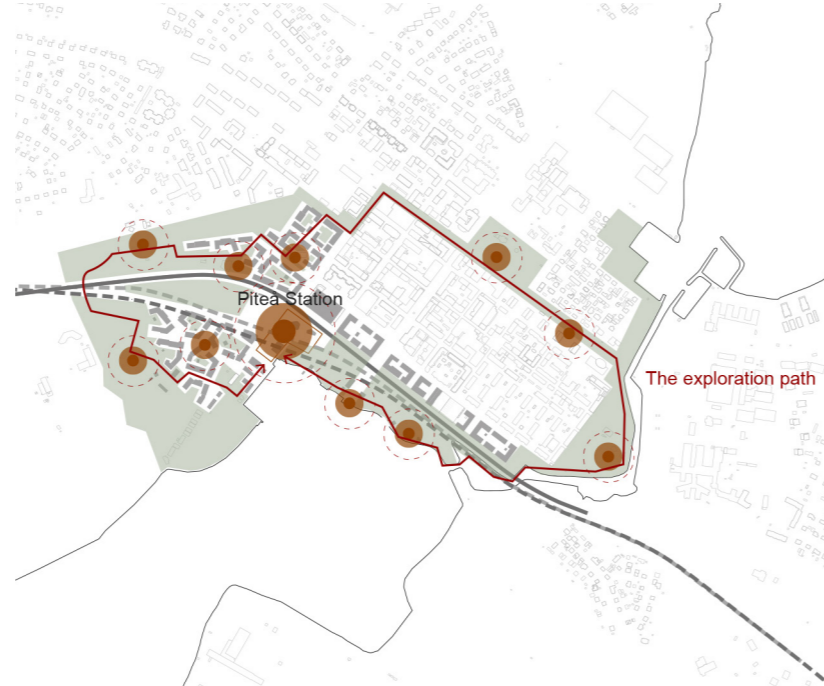


New underground connection transforming Uddmansgatan into a lively urban space that can host markets or serve as an art space. It maintains the important sightline towards the waterfront and links to the new cultural hub and recreational park along Sörfjärden.



ANCHORPOINT AND EXPLORATION PATH
The exploration path within the green ring connects the existing city with the new districts. Along the path there are different types of social meeting points creating various urban spaces and experiences, supporting many different diverse communities.

swimming, rowing or ice skating can take place, and such are accommodated through sheds and bridges. Biodiversity should be enhanced as some areas are kept wilder and more diverse. All year-round locals and visitors can enjoy events in the new cultural hub. The beautiful view towards the inlet can create for a magical setting in which communities of all ages can emerge – visiting theatrical groups can take residency here, local dance schools can perform and seasonal concertos can lure people from the upland in.

Västra kajen: The newly accessible district can host spaces associated with the station such as hotels and conference venues towards north, thereby creating a buffer to the railway and allowing for a higher building typology to take place. Housing can be placed in the southern part of the district towards the forestry area and the new sports park – here children will be able to play a football match on summer evenings, or easy and independently go for sports training. The district will have a view of the paper mill – an important typology in the narration of Piteå, as this industry holds the origin of the city. The new district is laid out in a distorted grid, an interpretation of Piteå's centre. Towards Sörfjärden an urban space with commerce and restaurants can attract locals and campers to go out for dinner, shopping or simply enjoy the lively waterfront.

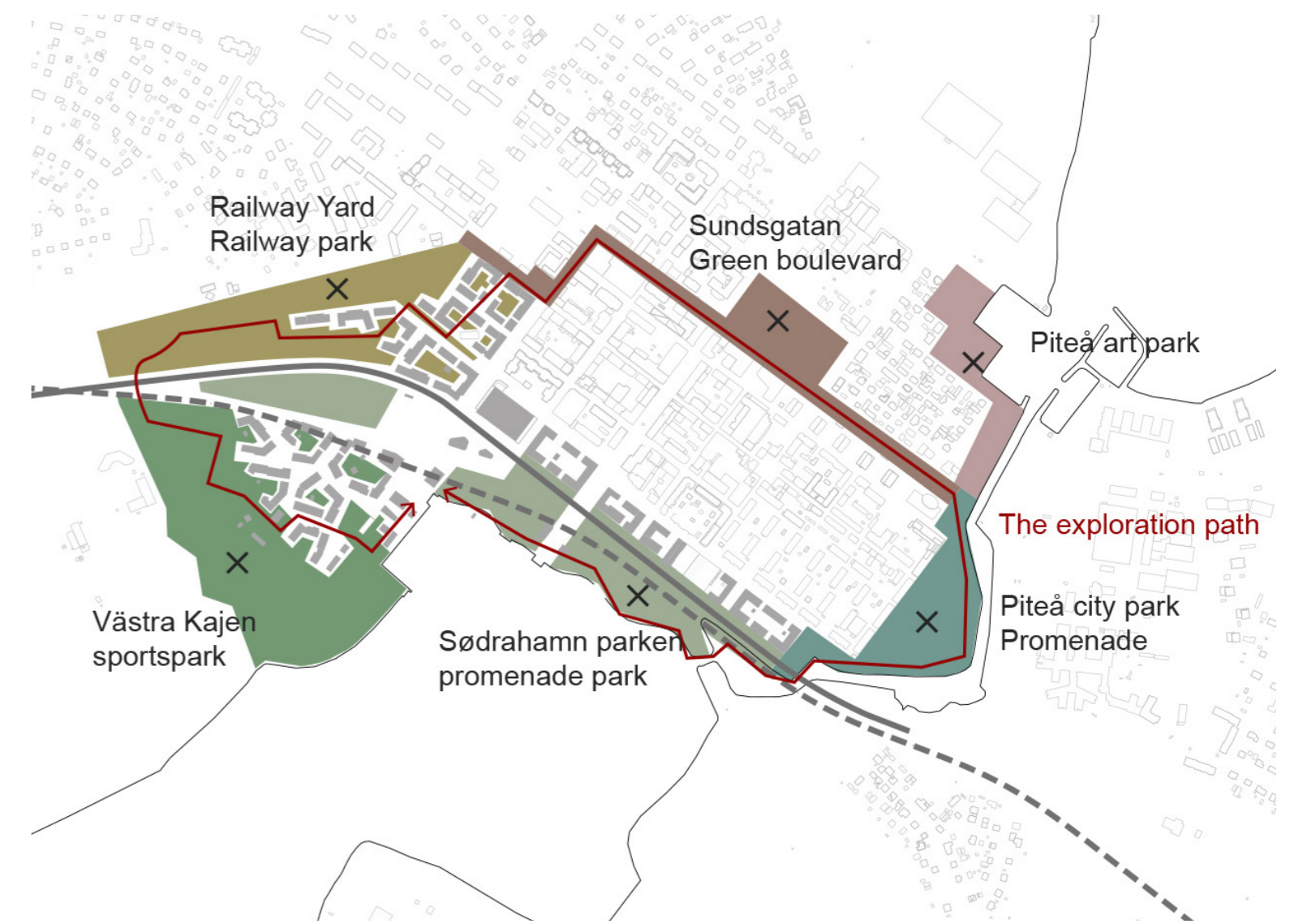
Railway Park: The existing centre will expand into the new Railway Park district. Here industrial traces such as the old train depot, existing warehouses, sheds, and old tracks meet mixed housing, commerce, and business. The new building typology is placed in the grid structure, creating a natural extension of the city. Once again this adds the quality of the large green courtyards. Towards the station space is kept free to allow for a green

parking area and a bus station. In the western part the grids dissolve and open to the large railway park. On the tracks old carriages can create small contemporary spaces or fulfil neighbourhood needs. How playful it could be to have one as a nursery, almost resembling a circus wagon, or to use them for rehearsal spaces for local bands.

Each of the new districts contains around 500 units, making it a total of 1500 new types of housing. When developing these new areas, the industry can for some seem as a barrier for development, but it is crucial to see it as an important layer in the narration of Piteå. The extraordinary nature of North Bothnia provides a beautiful scenery for the often large, fascinating typologies industry will provide. Furthermore, these areas are much more interesting to develop in the future, rather than starting off with bare land.

Another element to keep in mind when developing Piteå is the many scales that must be taken into consideration. Small scale, big scale, high-dense, low spread are all factors which create attractive, sustainable, living environments. In the new districts higher and denser elements can be used to create a buffer and more urban environment towards the railway, whilst small components spread out near the waterfront generates a temporary feel useful for communities and culture to arise. The diversity in the urban landscape allows for urban potentials and possibilities. Connections – both physical, visual and narrational – creates coherence and a sense of something place-bound.

Forget the single-minded economical focus, Piteå will resurrect as a holistic city for all. Reclaim territories, reclaim Piteå!



THE GREEN RING
The ring is clearly divided into a series of parks each with their own identity and opportunities. The Västra Kajen becomes a sport park offering activities for all ages, Railway Yard is a natural area with a wild and diverse fauna and the industrial traces left to narrate the story of Piteå. Sundsgatan becomes a lively green boulevard in a natural relation to the library and school. The old City Park has the classic leisure vibe and the new Södrahamn Park becomes a recreational promenade park with different social hubs in close contact to Sörfjärden all year round.



A new sea bath in Sörfjärden gives life to new communities in Piteå and creates contrast to the high speed trains passing by.

