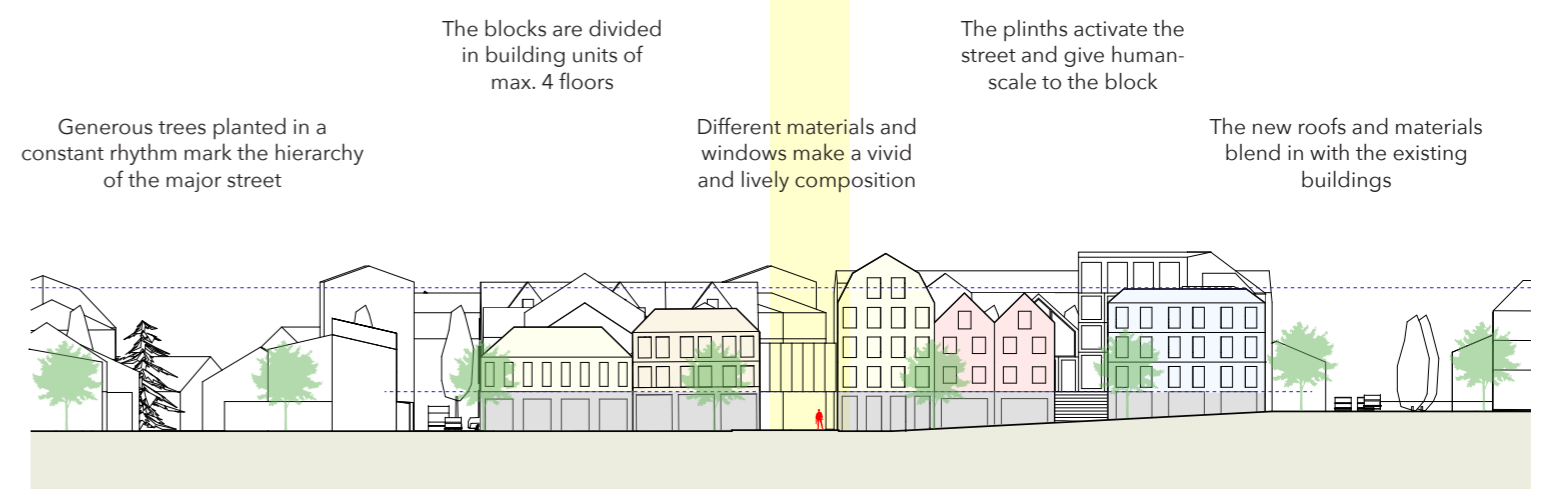
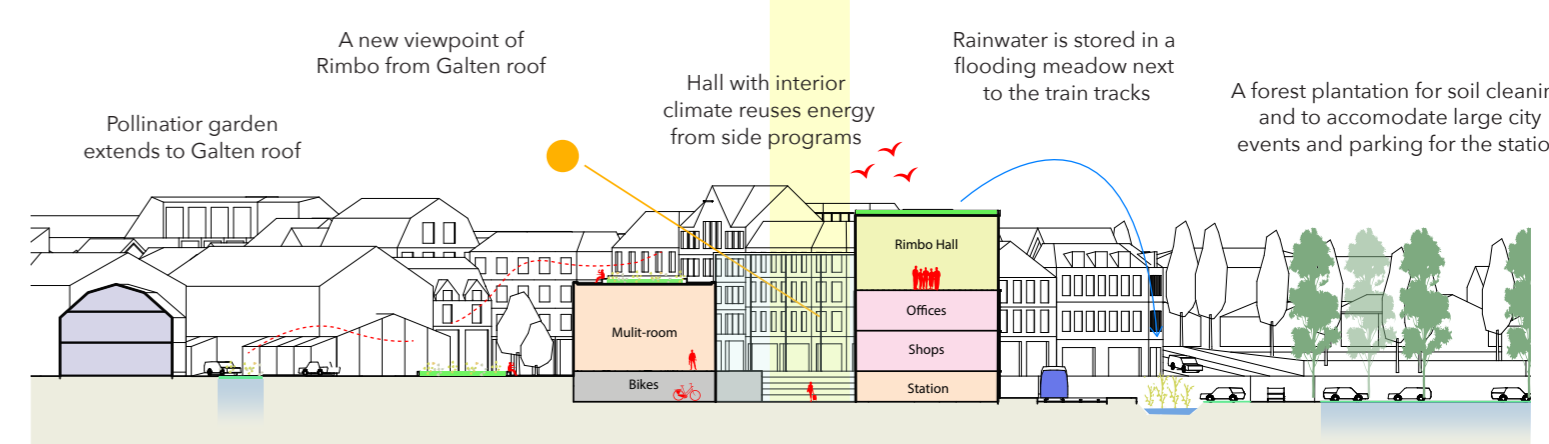


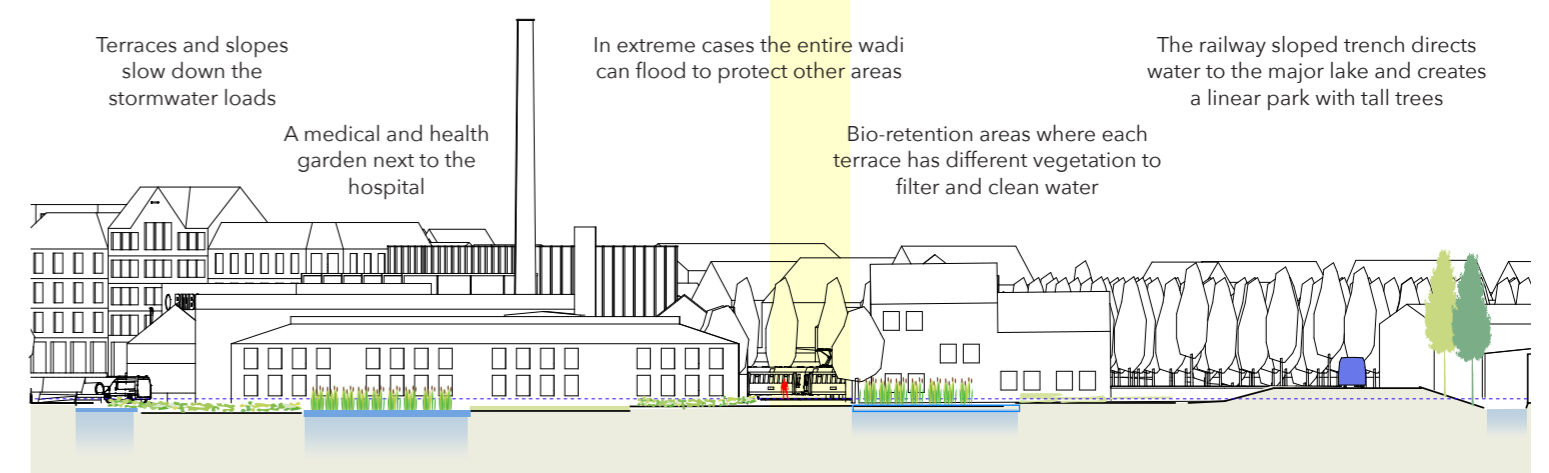
S1. The new densified centre: urban blocks with both collective and private green



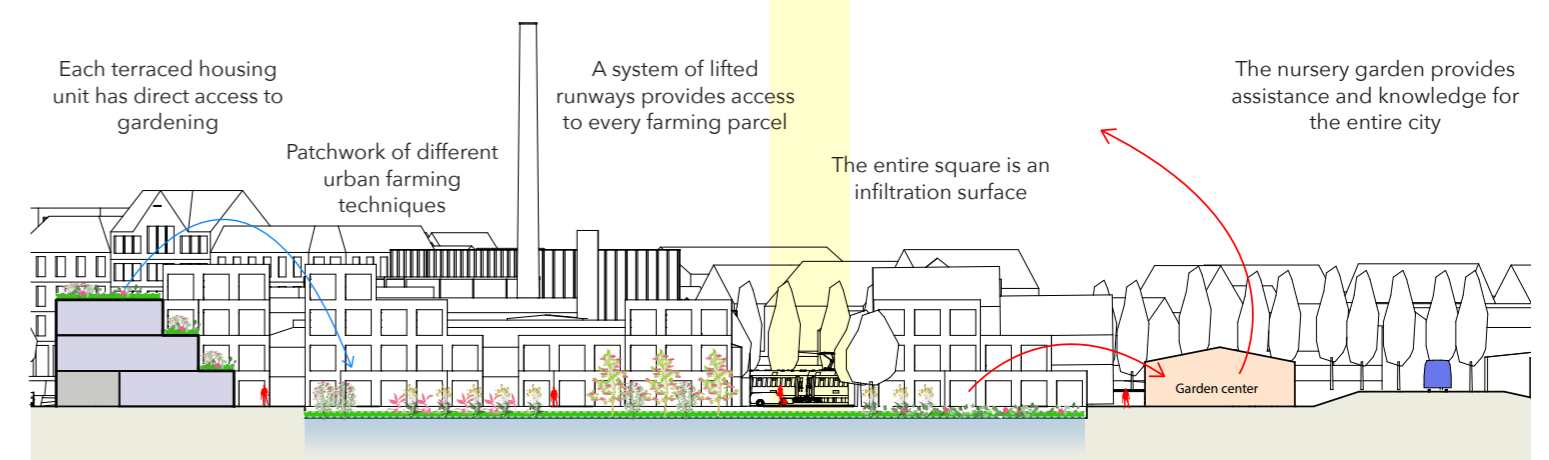
S2. The densification of Centralvägen



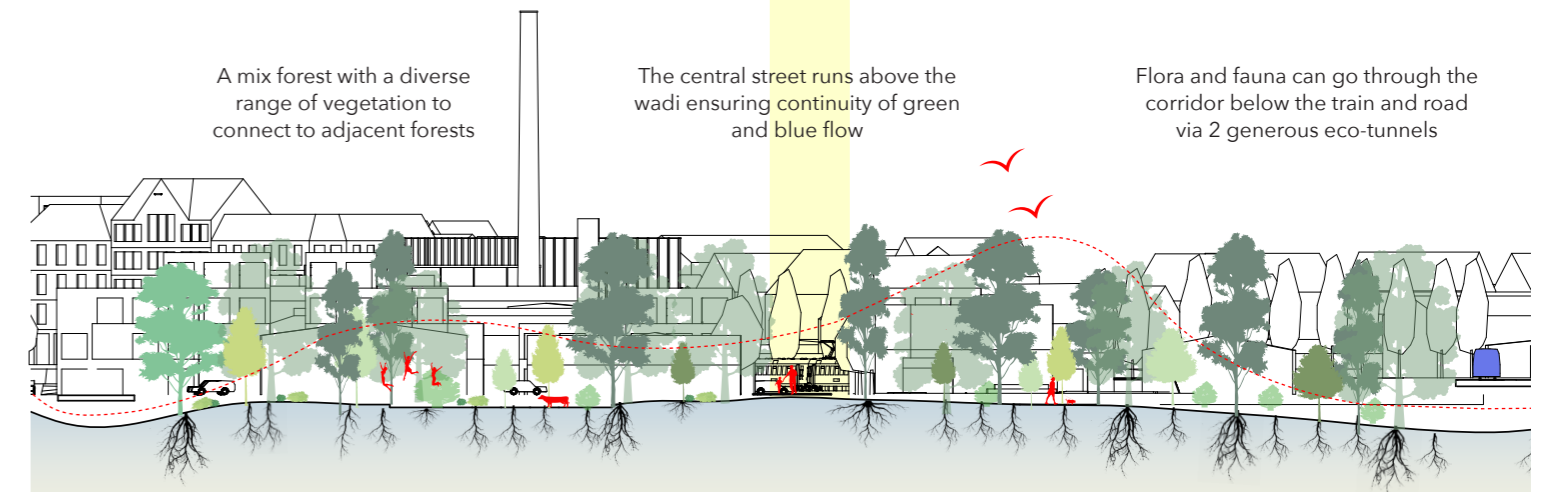
S3. The multifunctional transport hub



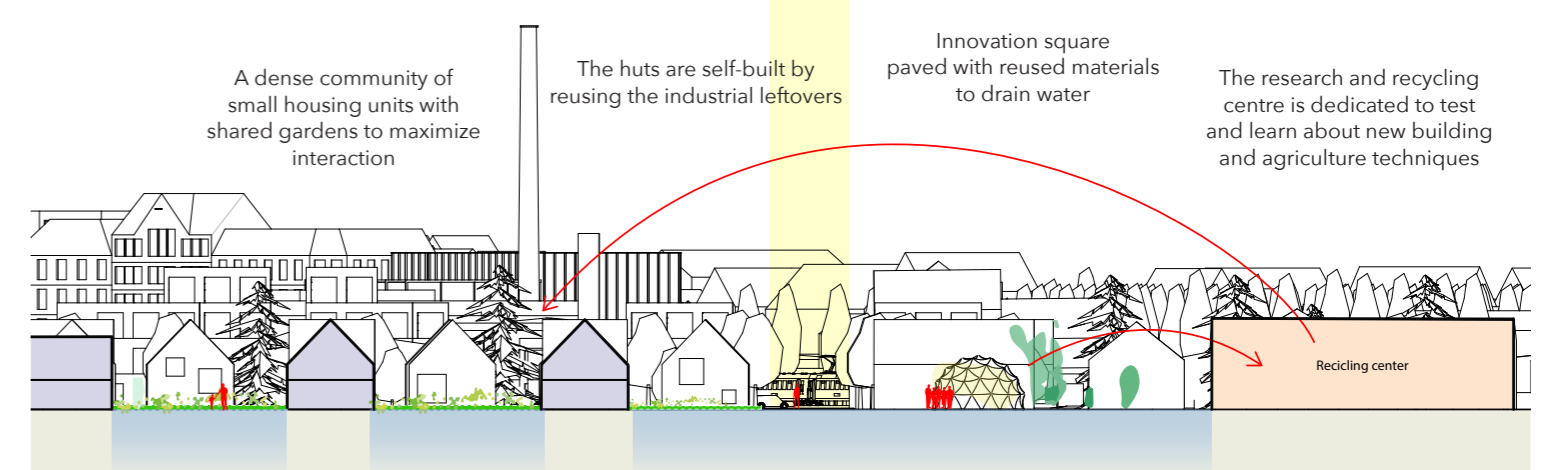
S4. The wadi, a green-blue corridor



S5. The Urban Village in an edible garden

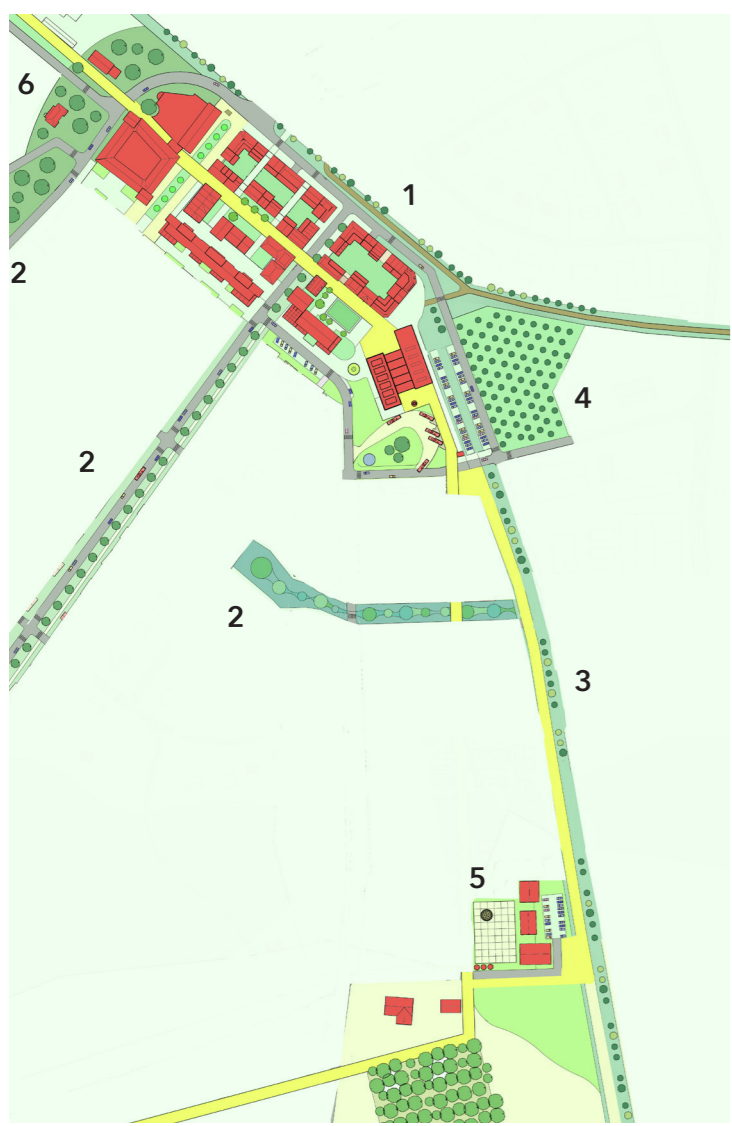


S6. The connecting, mix forest



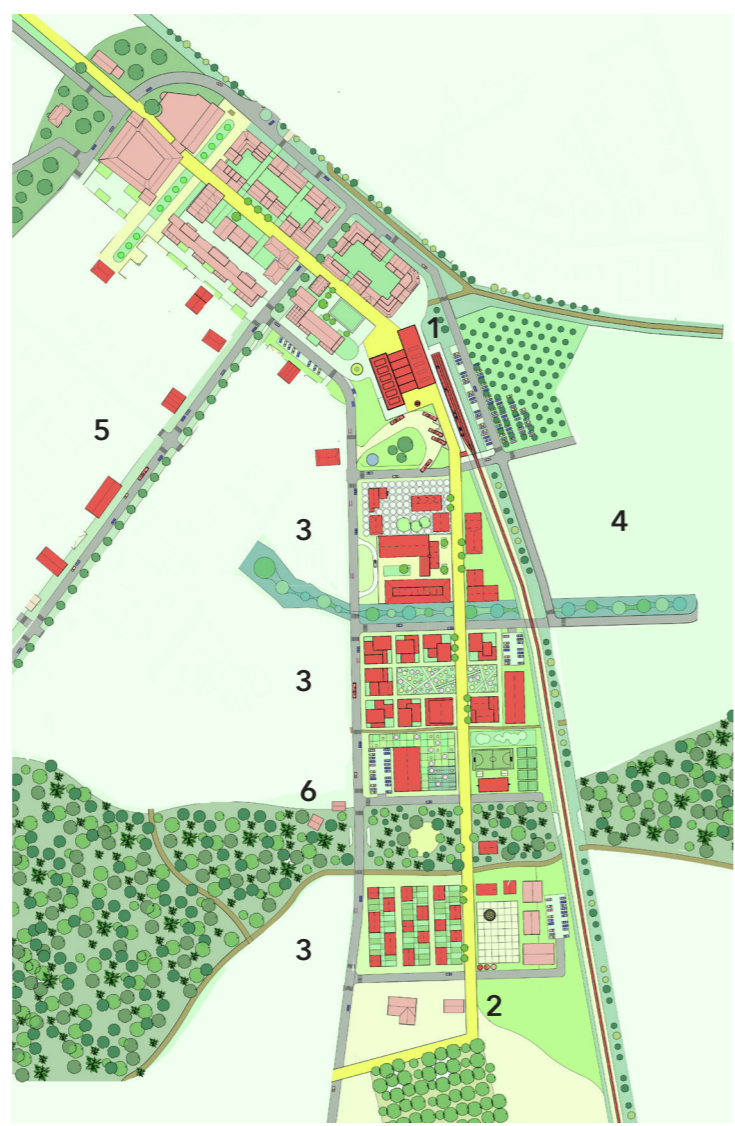
S7. The community huts and the Recycling Centre

25m



2030 | Road 280 relocates | pop. 7,500

1. Multifunctional hub and new centre
2. Create green transversal corridors
3. Close the ring - place main street along railway
4. Forest plantation behind hub
5. Establish the Recycling Centre
6. Restore old Train Station and connect with park



2040 | The train arrives | pop. 10,000

1. Train station
2. Move ring to centre of the superblocks
3. Develop superblocks
4. Decontaminate soil with green
5. Densify along the Centralvägen street
6. Create the connecting mix forest



2050 | Road 77 relocates | pop. 12,500

1. Extend the plots on the centre along old road
2. Develop new superblocks behind the railway
3. Transform the forest plantation into urban park
4. Town Hall becomes a real town hall
5. The superblocks adapt in density or program

RINGBO is an ongoing process, never truly finished in design, implementation, or management. It remains flexible, responding to the changing needs and desires of its residents. This requires an inclusive planning process with extensive input from the people involved, encouraging participatory democracy and fostering a vibrant urban life. An open, realistic, and adaptable approach that mobilizes The Rimbo Spirit.

Establishing a dialogue between locals and experts is essential in this open process. The urban superblock system, like any living organism, evolves over time, and sustainable development means embracing openness and adaptability.

