

1. Recreational and ecological loop
2. Järnvägsparken
3. Grocery store/Parking garage/Kiosk
4. Restaurant/Library/Swimming pool
5. Square/Market place
6. Pharmacy/Systembolaget
Addition of new housing on top of existing building
7. Green roofs / Green house / social gatherings
8. Hill/Green area
9. Bank/Restaurant
10. Coop
A new building to strengthen the urban street.
11. Infill
Adding to and restoring services back to the town center will create a more vibrant city
12. Doctor's office
Adding to and restoring services back to the town center will create a more vibrant city
13. Restaurant/BVC
14. Pocket park
Adding more green to the city center
15. Gym
Adding to and restoring services back to the town center will create a more vibrant city
16. Galten - Transportation and activity hub
17. Chimney - Land mark
18. Mobility hub
Parking for cars/commuters/car pools to avoid large paved parking areas.
19. Bicycle parking
20. Parking busses
21. Train tracks
22. Kindergarden
23. Addition on top of existing building

AXONOMETRIC DRAWING - CENTRAL RIMBO

RE:CONNECTING RIMBO

NATURE / RECREATION / CULTURAL HERITAGE

create vibrant spaces and promote more sustainable everyday transportation choices by foot or bicycle along the Loop.

A mix of activities along the Loop and in the city center will create a safe, inviting, and lively environment for people of all ages. Easy access to the Loop also facilitates access to attractive non-commercial and commercial social activities, which promote greater social sustainability.

RECONNECTING TO RIMBO'S HISTORICAL PAST

Rimbo has a strong identity connected to its history as an agricultural and industrial area. The Green Loop provides easy access to both agricultural land and Rimbo's industrial buildings, such as Galten and the railway roundhouse. Local resources, including natural values, social meeting places and activities, local enterprise, and the heritage of "Rimbo spirit", as well as the city's

industrial past, constitute the catalyst for new forms and activities on the site. Our aim is to preserve and renew at the same time by assuring that new additions preserve and strengthen existing values. The Green Loop is part of the first phase and the key framework, but can also be seen as a link between Rimbo's past, present, and future.

The pedestrian zone along Köpmannagatan will be extended from Järnvägsparken to Galten. At the crossing of route 77/Köpmannagatan and Köpmannagatan/route 280 pedestrians will have priority, and the ground will be paved like the rest of the pedestrian street. Central Rimbo will extend between two landmarks; the water tower to the west and the industrial chimney of Galten to the east.

Phase Two: Transportation and Activity Hub

Galten represents the industrial era that developed around the railway junction and the connection to the rich surrounding agricultural lands. Adjacent to Galten lies the old railway embankment that is reserved for the future development of Roslagsbanan. Galten's central location, its strong connection to Rimbo's industrial past and the railway, and its iconic tall chimney render the building the perfect location for the new Transportation and Activity Hub.

While the Green Loop allows citizens to easily access all of Rimbo by foot or bicycle, the Transportation and Activity Hub will enable sustainable transportation outside Rimbo. From Galten, there is easy access to six bus lines and the train platform, allowing quick changes between bus and train. Bus traffic is separated from the pedestrian and bicycle zone. One can also easily bring a bicycle onto the train by using the ramp just south of the building.

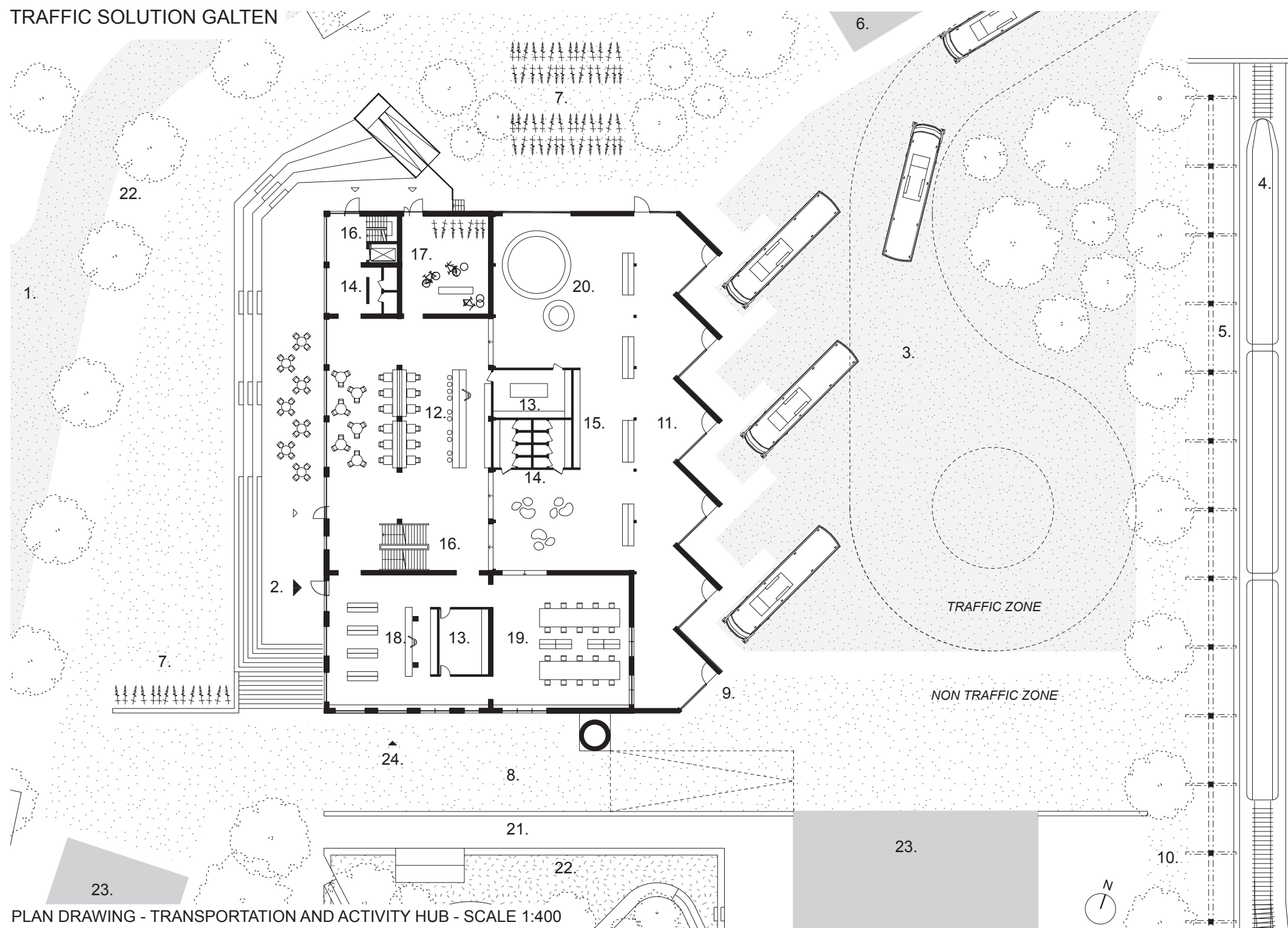
The footpath along the old railway embankment will be retained and strengthened. It will be connected to footpaths in the agricultural landscape and pedestrian and bicycle paths in the southwest and the new housing blocks south of the center.

Phase Three: Central Rimbo

In the city center a generic grid of streets will link to existing streets and sight lines to an area for six new housing blocks. The simplicity of the grid creates a framework allowing expansion to be carried out in even smaller phases.

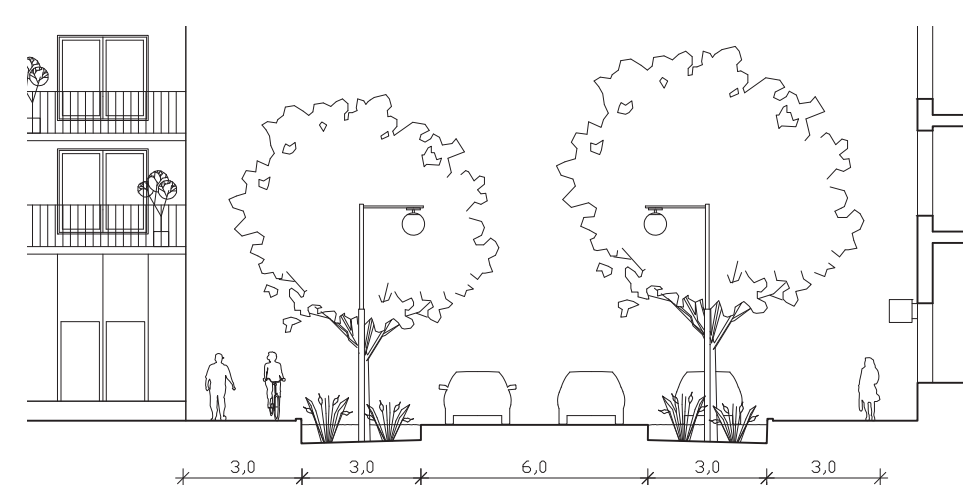
To reduce land consumption and create a mix of housing types, no villas will be added in the new area. Instead, those city blocks will have row houses and apartment buildings that complement the existing housing stock. A mix of different types of housing will attract diverse groups to move to Rimbo or remain living there.

TRAFFIC SOLUTION GALTEN

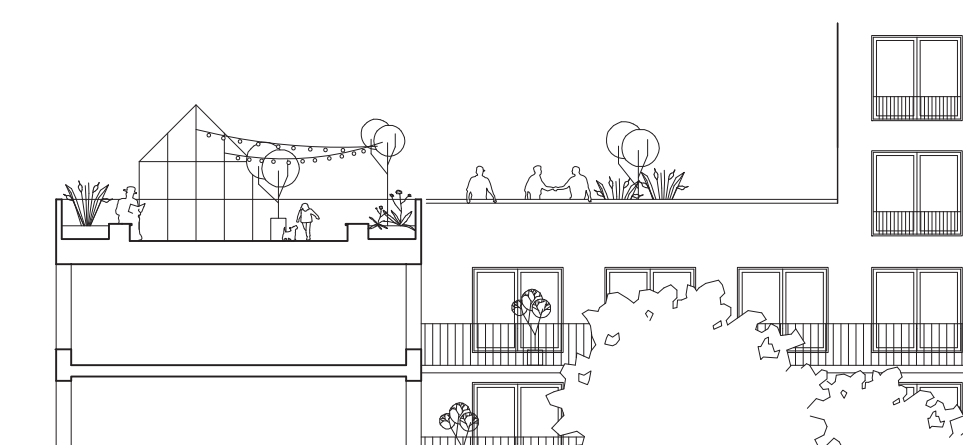


PLAN DRAWING - TRANSPORTATION AND ACTIVITY HUB - SCALE 1:400

STORMWATER MANAGEMENT



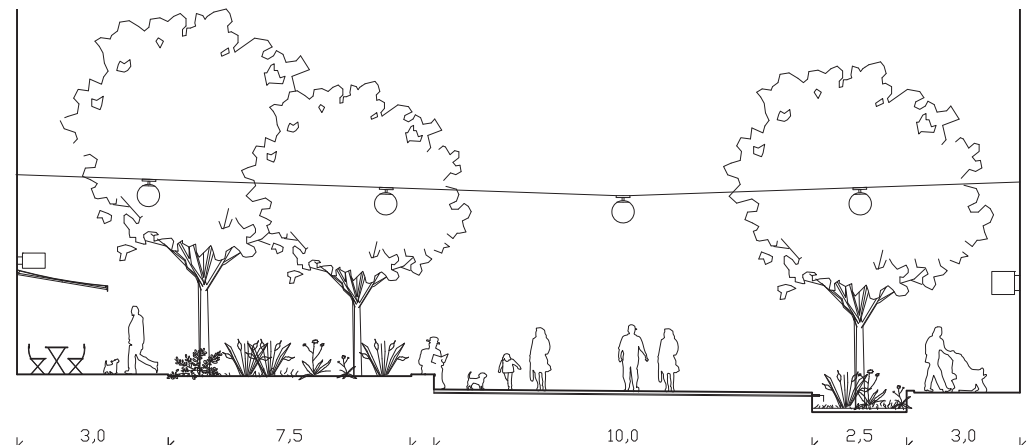
GREEN LOOP - TRANSFORMATION, ROAD 280 AND ROAD 77 TO URBAN STREETS
One large continuous planting bed dominates the trees profile and its sunken basins provides space for planting and rainwater collection. This create and uninterrupted ecological corridor with high biodiversity. Above the sunken rainwater garden, a steel grid allows bike- and carparking.



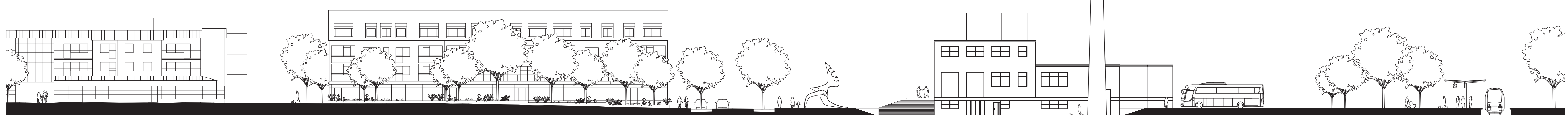
GREEN ROOF
Every new building with a "flat" roof should have a green roof to delay and detain stormwater. The roof should also be a place for urban farming and social gatherings.



GREEN COURTYARDS
One large planting bed dominates the courtyard and its sunken basin provides space for planting and rainwater collection. A ramp allows everyone to access the sunken garden. A green house, accessible from the upper level, is placed in every courtyard along with urban farming beds (Palkkragar) allowing all inhabitants to grow some of their own food.



GREEN CITY CENTRE
A pocket park is added to Köpmannagatan's western entrance towards Galten. The park together with a planting bed with a sunken basin provides space for planting and rainwater collection in central Rimbo. The street is slightly slanted towards the planting bed. A ramp allows everyone to access the pocket park.



SECTION - ALONG KÖPMANNAGATAN TOWARDS THE TRANSPORTATION- AND ACTIVITY HUB - SCALE 1:400

- | | | | | | | | |
|---|------------------------------------|--|---|-----------------------|-----------------------|----------------------|---------------------------|
| 1. Recreational and ecological corridor | 4. Roslagsbanan - final stop | 7. Bike parking | 10. Footpath leading south along train tracks | 13. Kitchen / Storage | 16. Elevator / stairs | 19. Co-working space | 22. Sunken garden |
| 2. Galten - Transportation and Activity hub | 5. Platform roof with solar panels | 8. Footpath with bicycle to train | 11. Waiting hall (extension) | 14. Toilets | 17. Bike lab | 20. Exhibition space | 23. Mixed dwellings |
| 3. Bus traffic - six bus lines | 6. Mobility hub | 9. Footpath to train (no traffic crossing) | 12. Restaurant | 15. Luggage lockers | 18. Shop/Kiosk | 21. Green courtyard | 24. Entrance bowling (-1) |