



View of the New Skåvsta Square

PIAZZAS NETWORK

The arrival square, New Skåvsta Square, and the Southern square, Market Square, signpost the beginning and the end of the boulevard, they are the social landmarks of the district. Smaller squares are instead distributed within each district sub cluster, and they tend to more neighbourly functions. Slightly tucked away from the principal district circulation pathways, they do represent an important local address, drop off points for the public transit system, social breakaway spaces for the offices and workshop, and mingling backdrops of the clusters.

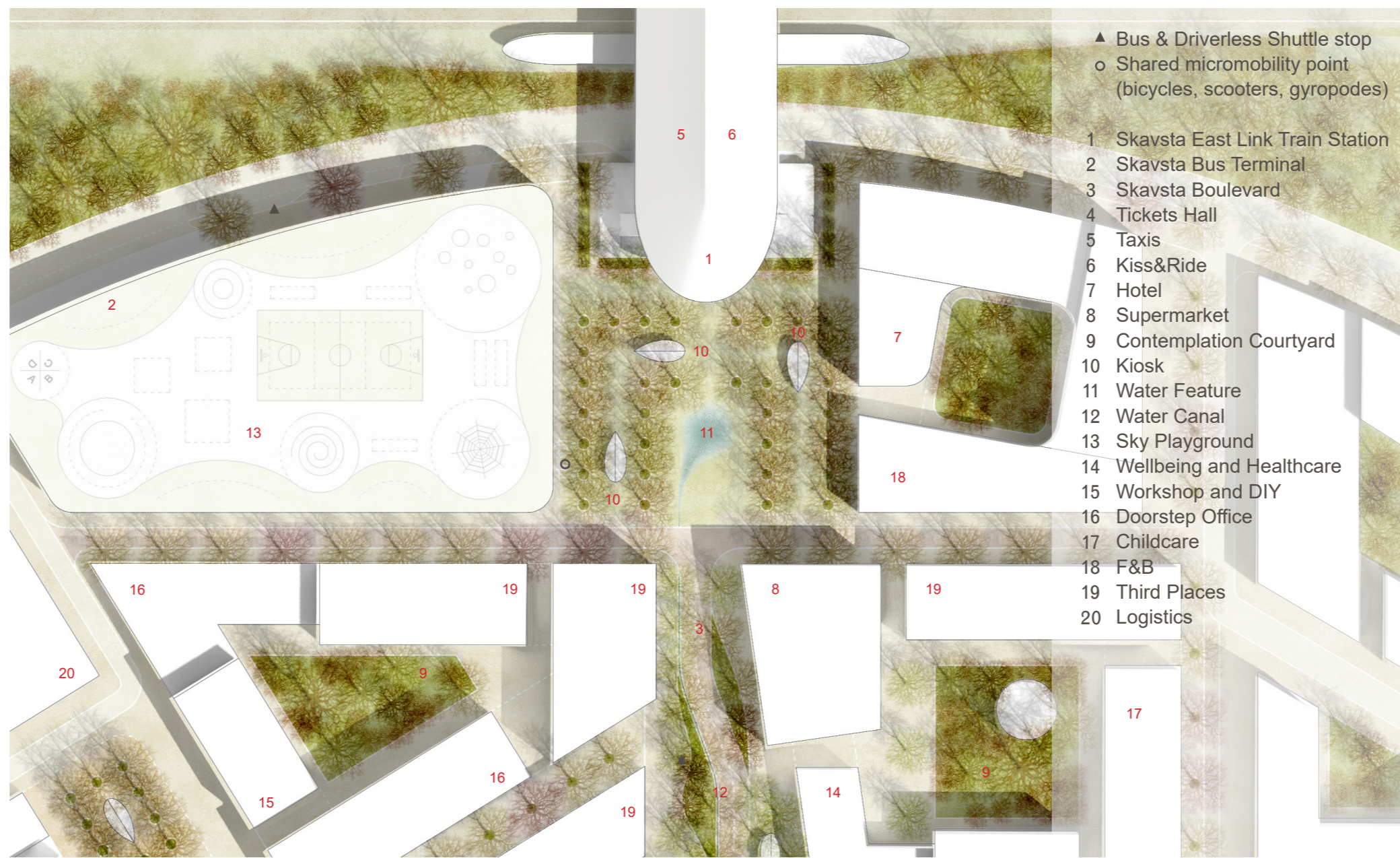
NEW SKÅVSTA SQUARE

The arrival square, New Skåvsta, is the pulsing heart of the district and it is the gateway into a world of innovation. In the first place, it plays the fundamental role of multi-modal mobility hub for travellers and commuters, buses, trains, cars, and

soft mobility accesses all adjacent to one another.

It is a square designed to be enjoyed from the top. Descending from the upper levels of the train station one truly experiences an immersion in nature, overlooking the boulevard, and slowly moving through the thick canopies of the square. The hotel is just on the square while the knowledge hubs is just a few meters away. This guarantees best accessibility for overnight visitors of the knowledge hub, and layover visitors.

The square is punctuated with kiosks for F&B, and a large surface fountain activates the environment and offers an place for play for kids. Children can find a dedicated playground on top of the bus station. More F&B offering lines the ground floor of the square, to directly serve the airport community. Lighting is thoroughly provided for all year activation. Its playful design instantly conveys a human scale feel to this new district adjacent to the airport.



New Skåvsta Square scale 1:1000

NEIGHBOURHOOD SQUARES

Normally a welcoming quiet urban realms on the way to your workplace, these squares can be shared and activated for 'block parties', overflow of industry and company events, play

host to other temporary installations, and so on.

These mini urban rooms define the character identity of the cluster, with public art and specially curated amenities.



View of a typical neighbourhood square

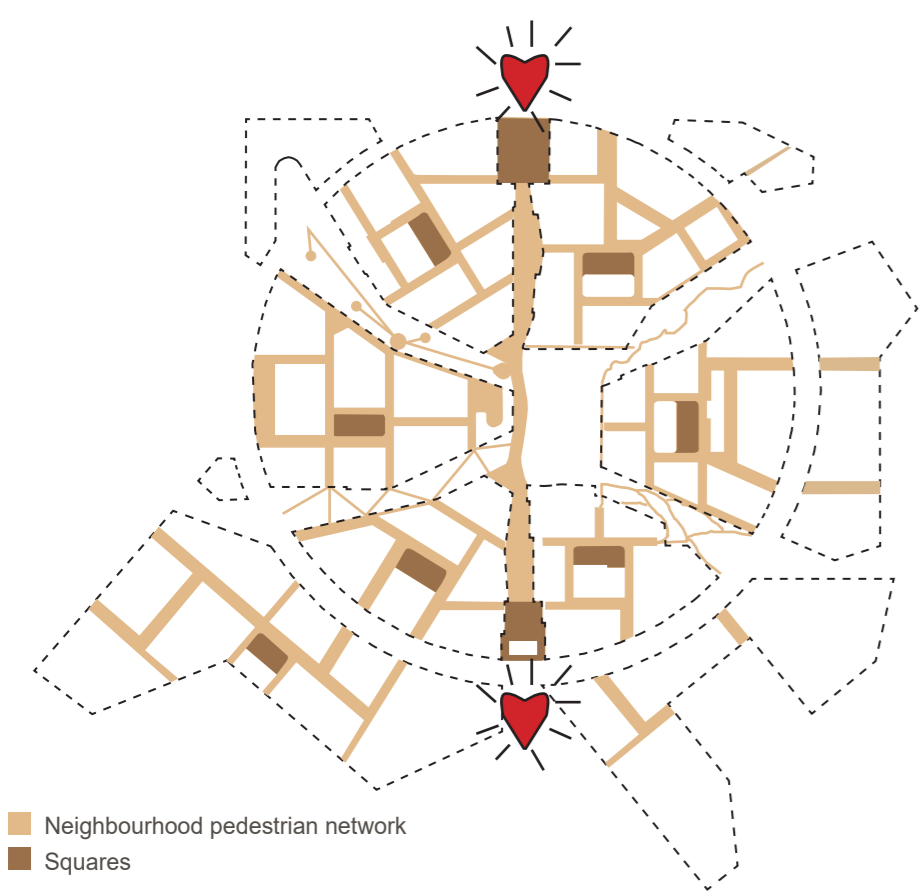
MARKET SQUARES

Arrival point of the boulevard, the Market Square is the central food hub for the local community, with both restaurants and a grocery shop point. It is supplied 'farm to

fork,' with produce coming from the nearby 'agricultural' axis, and from the greenhouses located on top of selected buildings. It is also a market place for the products of the Nyköpingsån valley. Culture meets palate!



View of the South Square



Neighbourhood pedestrian network
Squares

TIME SEAMLESSNESS

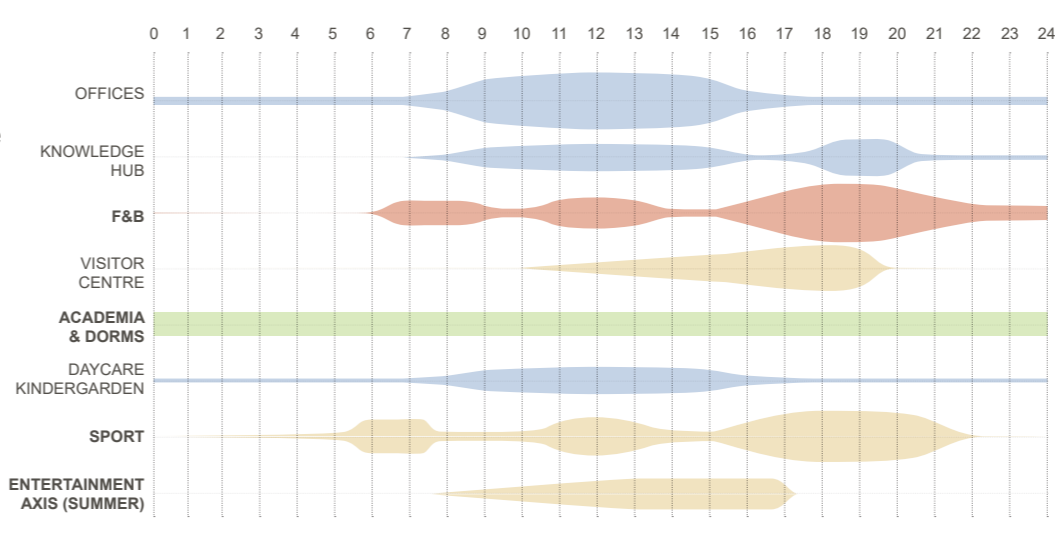
Safe places, inviting districts, and functional urban environments all have in common good coverage of activation throughout the day. The famous Jane Jacob's 'eyes on the street.' People are attracted to other people, and watch over others.

In order to do this here, we tried to maximize amenities for the district's community, as well as providing more ample breadth attractors, whether connected to the district's business

operations and innovative field) knowledge hub), or connected to the regional cultural assets (visitor centre partner with Sörmlands).

Additionally the provision of a world class public realm, with authentic 'outdoor living rooms' for the city, and of a new Fork-to-farm Market will expand for the everyday offer of Nyköping's community.

NB: Bold font for activities including WE



MOBILITY

Mobility Hub/Bus Station

The mobility hub is the keystone of the district, serving a variety of transport modes.

The ground floor accommodates bus stops, both regional and local lines. Shared electric vehicles will also dock here. The main bicycle storage for the district is located here, together with a repair shop on the floor above.

Other services to passengers include delivery lockers, to pick up personal packages on the way back home, small retail and F&B.

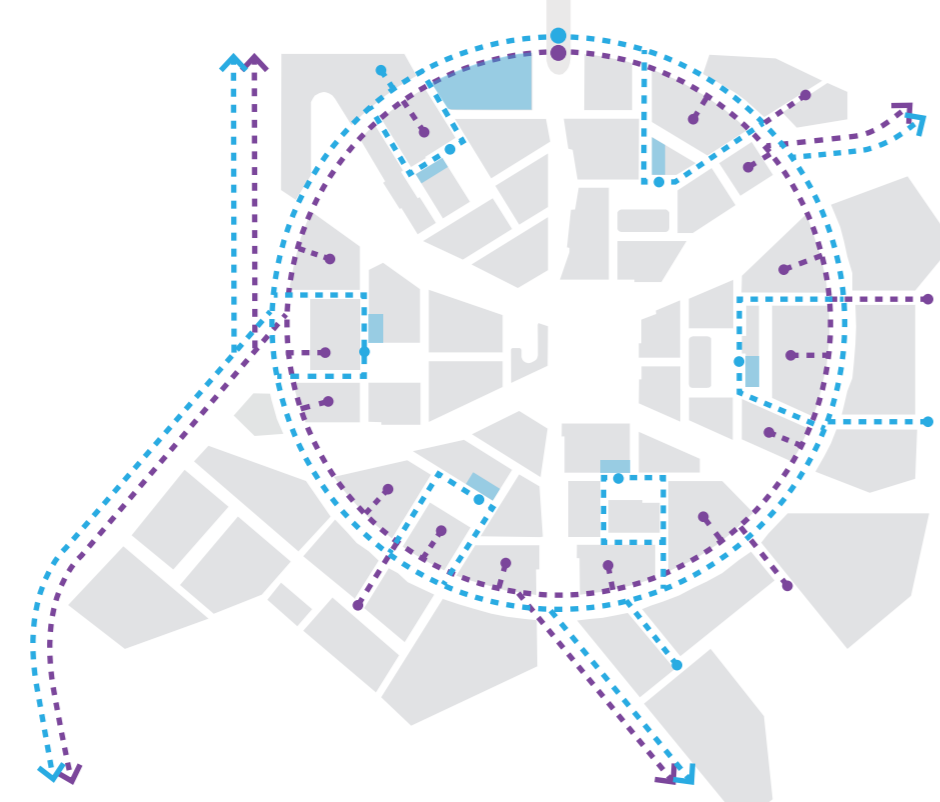
Upper floors will provide car parking for the district and for visitors, including EV charging spots and E-car hire.

The fourth floor is dedicated to a playground with a view! Children can play and enjoy planes landing and departing. Additional community seating, and enticing artist designed surfaces will make this a special place.

The adjacent access from the ring road will be landscaped with planters and green pockets. The pockets of green behind the station and adjacent to the knowledge hub can host food trucks and pop-up market during peak seasons and special days.

Parking

The parking strategy aims at reducing the offer to decrease demand for parking. Therefore a few spots are provided in strategic locations with access to public / shared mobility.



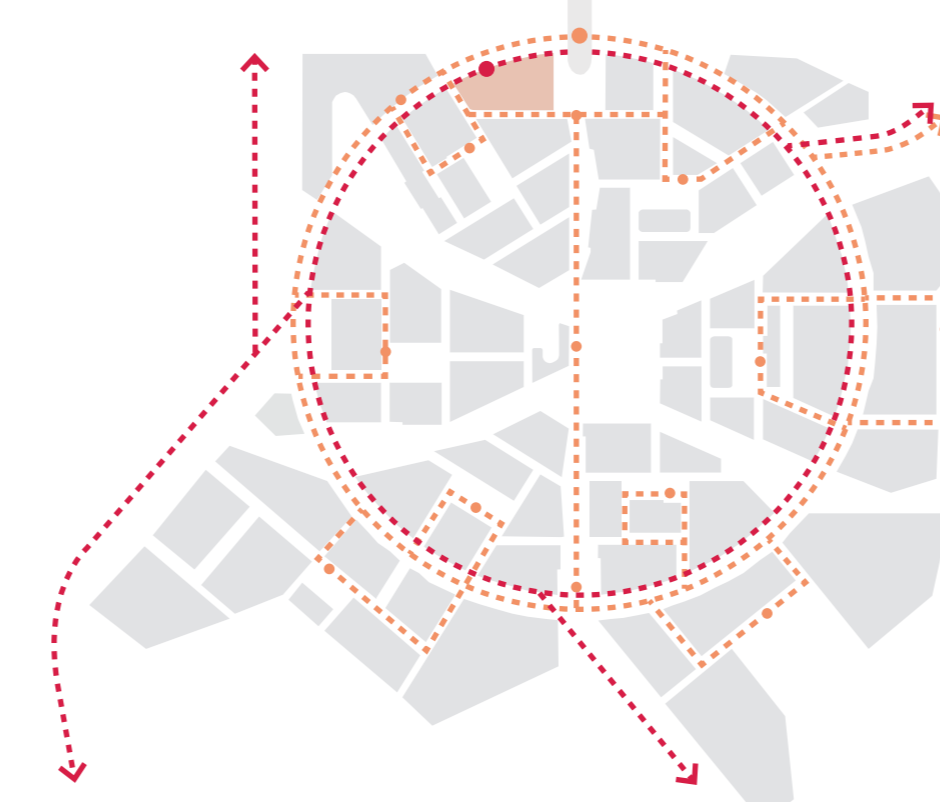
Commercial logistic mobility Private mobility Office parking Public mobility Public micromobility Visitors parking

Commercial EV

In order to maintain the highest quality of liveability in such a dense live and work environment, commercial vehicles on the premises not only have very specific dedicated paths but could use an electric fleet.

Driver-less line

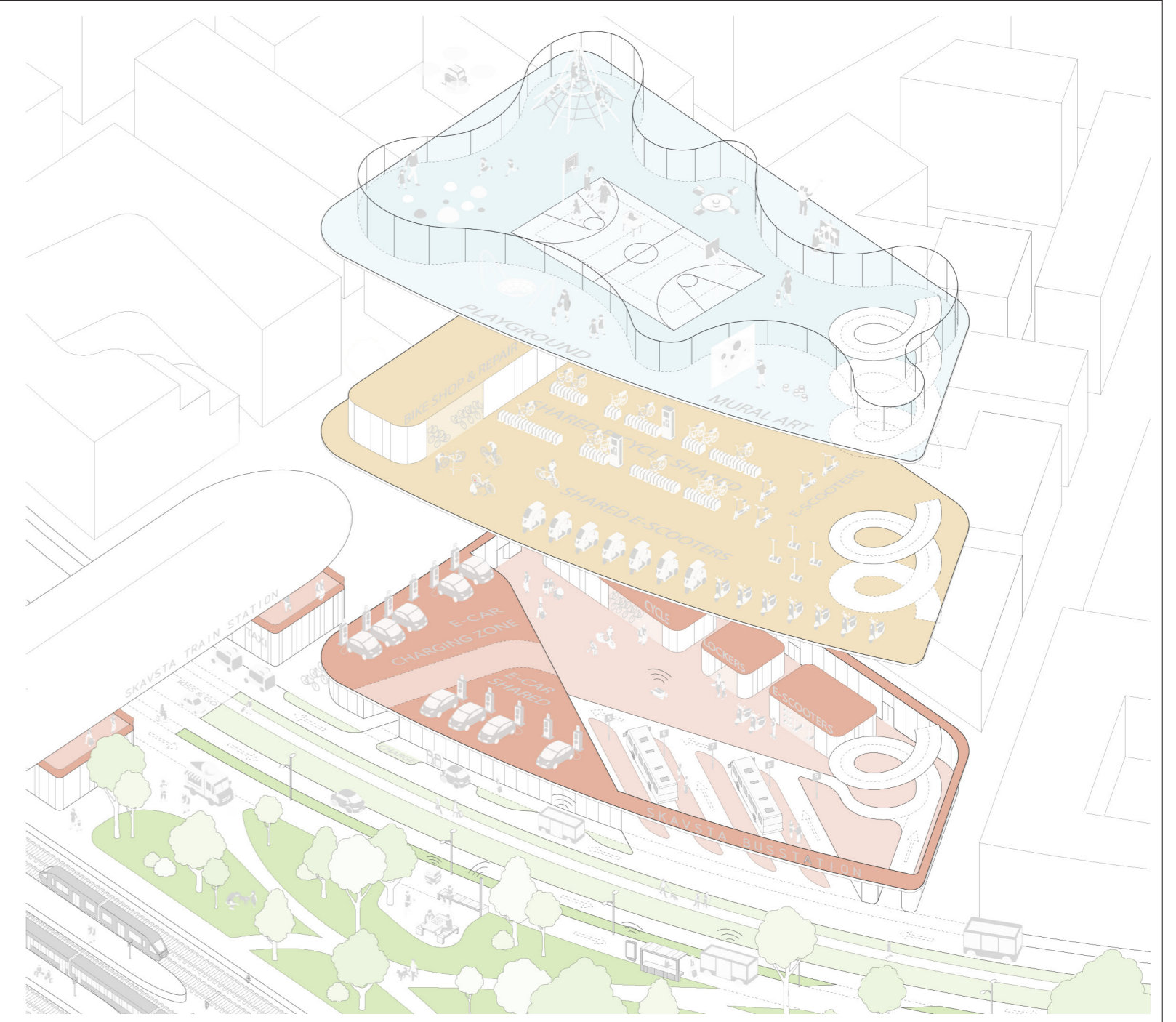
Driver-less e-buses system could integrate the 'rail' transport for commuters in peak-hours, and switch to on demand routes in off-peak hours. Stations can be mobility - switch points.



Public mobility Public micromobility Visitors parking

Micro-mobility

Shared mobility gets personal with micro and light vehicles such as shared bicycles, pedal assisted bicycles, electric scooters, etc. These can be docked at local hubs such as the neighbourhood squares.



Mobility hub seen from North-West