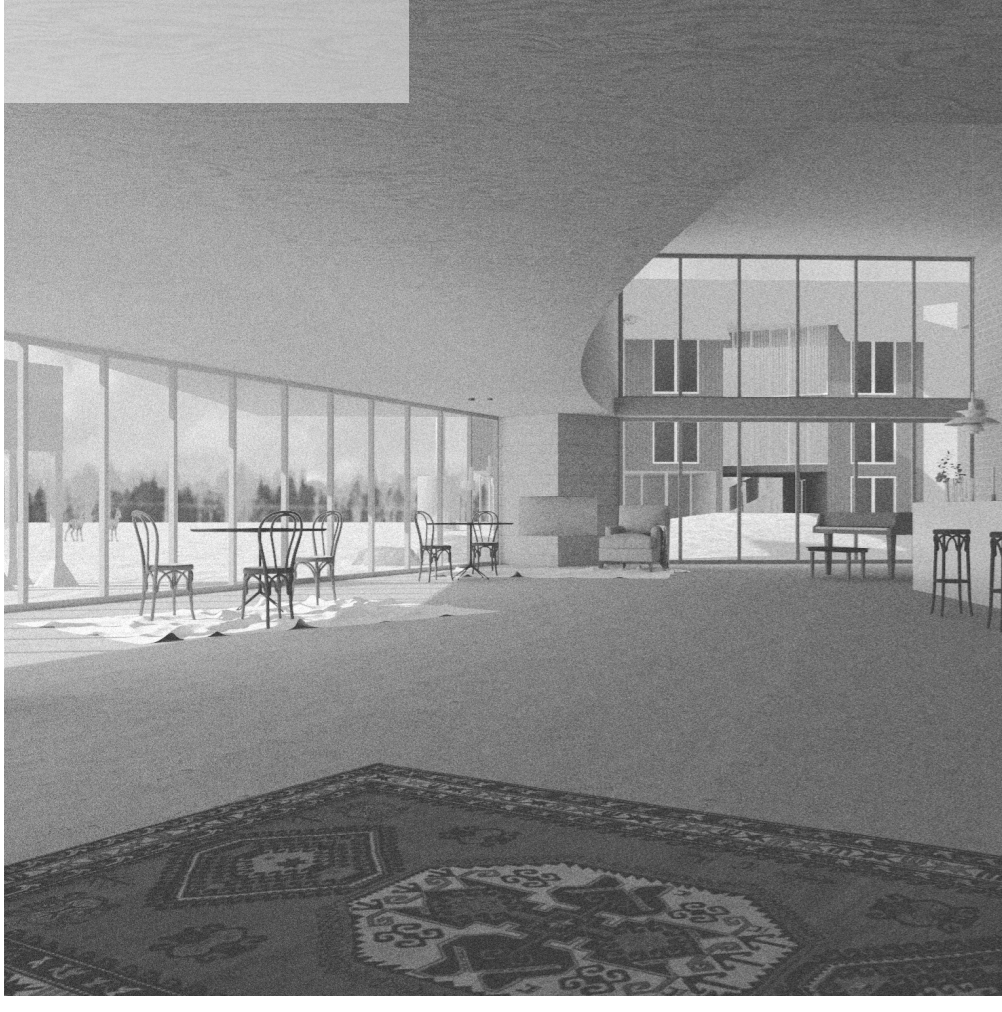


OE661



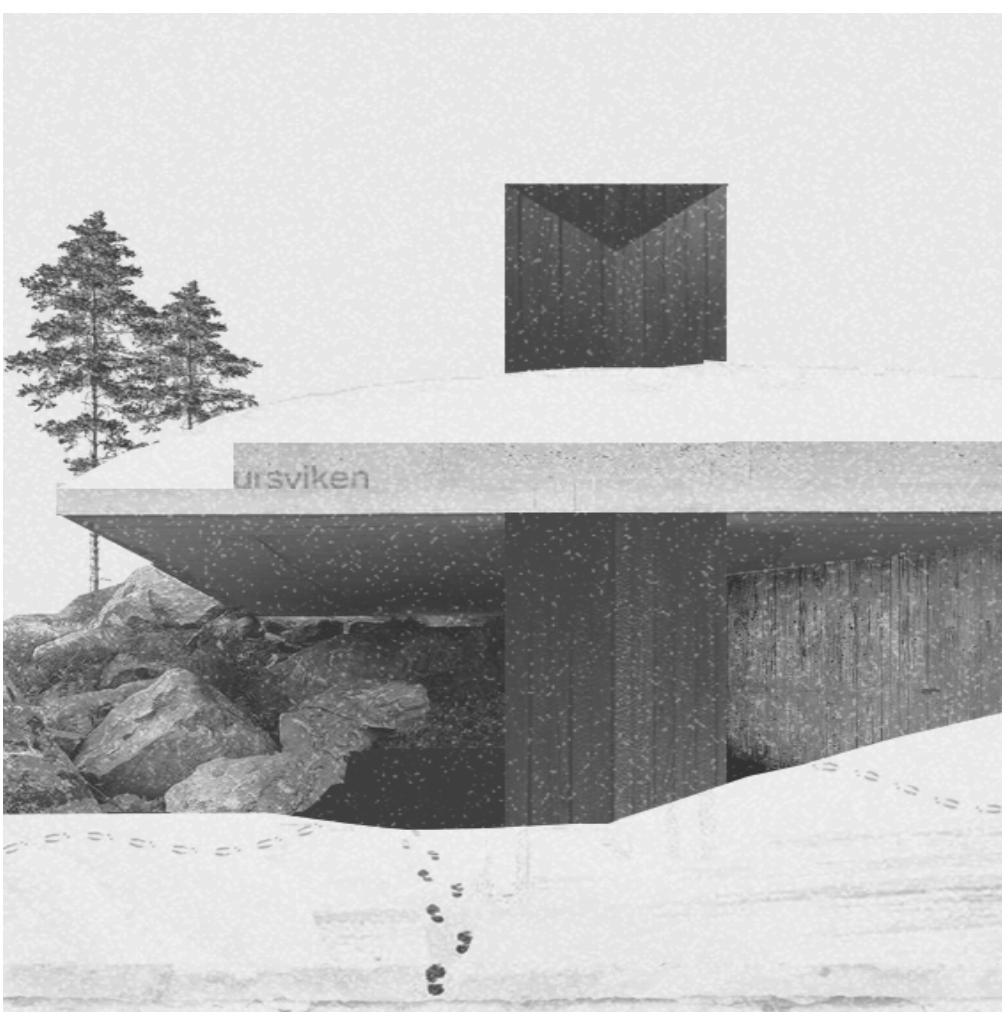
13 The Hearth: A Multiscale Approach
 Around the fire, stories are told, laughter erupts, and hearts warm up. As a catalyst for conviviality, fire plays a crucial role in bringing people together, encouraging exchanges, and awakening a sense of closeness and camaraderie. Its comforting presence establishes a warm atmosphere that nourishes social bonds and strengthens relationships among those present.



12 Housing as an Ecosystem
 The hybrid living space integrates architecture and recreation for a shared future. Playful spaces enhance social interaction and residents' quality of life. Common areas and leisure activities encourage community bonds and collaboration. This approach creates a vibrant and connected living environment, fostering a sense of togetherness among residents. The innovative design promotes a fulfilling and supportive communal living experience.



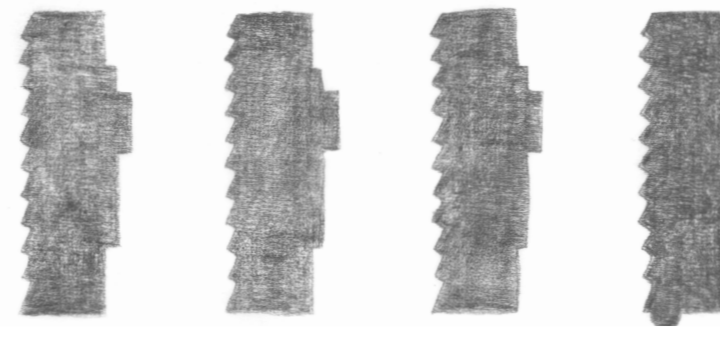
11 Archetypal Typology
 In Ursviken, we have identified a typology of row housing that stands out for its compact architecture and strong identity. This configuration creates microcosms where neighbors live in harmony. The row housing design allows for a higher density compared to scattered small individual houses while seamlessly integrating into the pre-existing urban fabric.



10 Domesticating Infrastructure
 Public infrastructures are designed to enable residents to coexist harmoniously with their environment, which can sometimes be harsh and hostile. An example of this is bus shelters, which are conceived as true comfortable micro-architectures, providing users with a pleasant place to wait for their bus, sheltered from the cold and winds, allowing them to contemplate the landscape that constantly surrounds them.

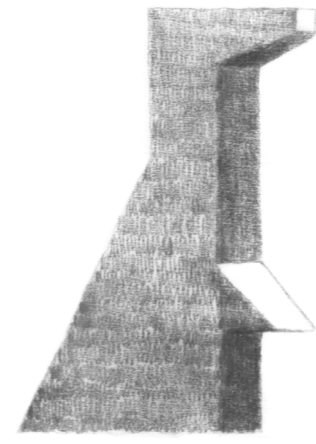


09 Rethinking the Relationship with the ground
 To preserve the soil's regenerative capacity, some constructions, especially in the most polluted areas of the site, are built above ground or on stilts, allowing vegetation and microorganisms to naturally restore soil fertility. Vegetation can colonize the areas beneath the constructions, promoting the formation of new plant layers and providing additional habitat for a variety of animal species.



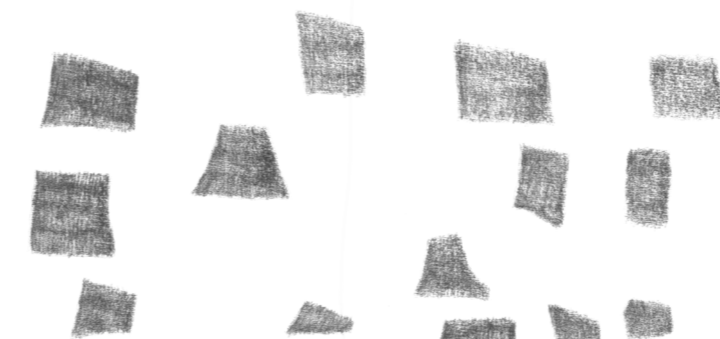
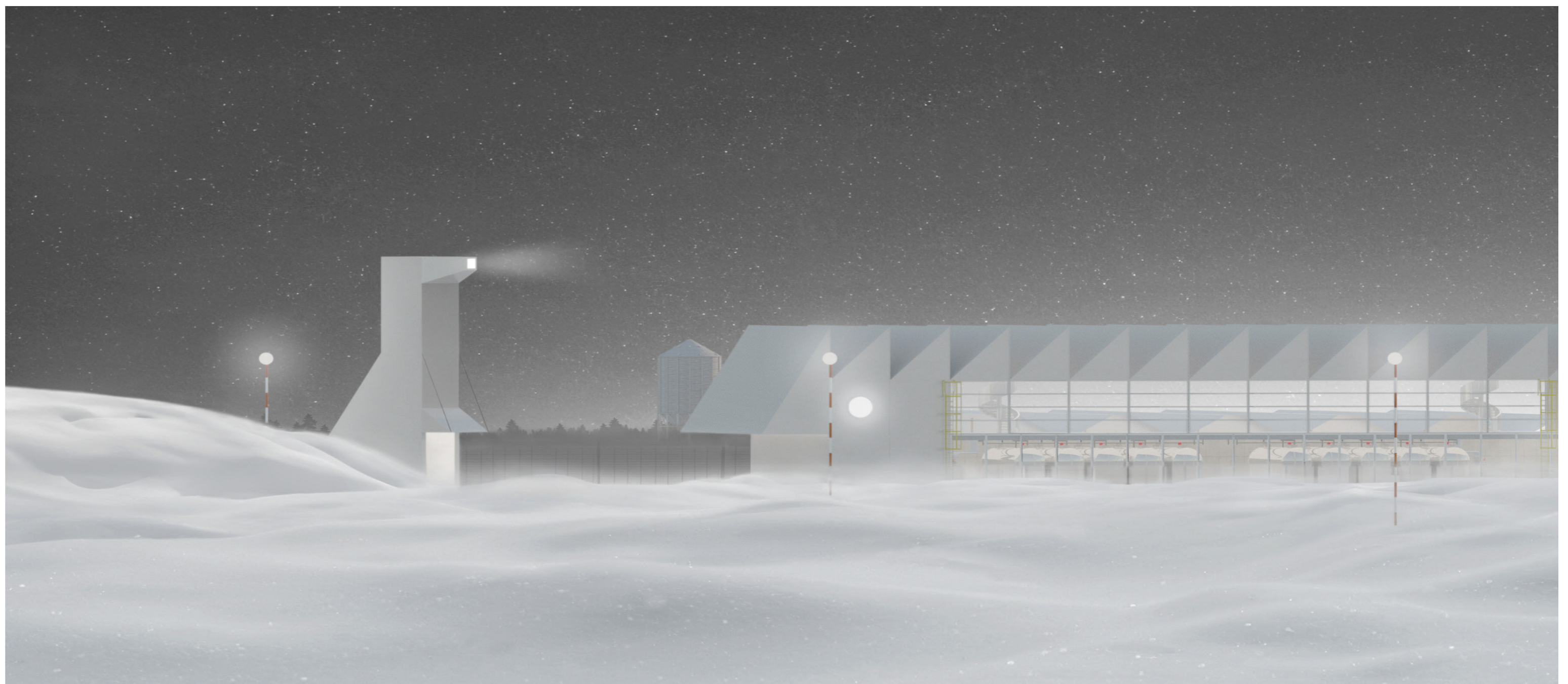
De stora husen ▲

In Ursviken, the residents understood the importance of comfort, well aware of the unforgiving harshness of winters. The locals referred to the "big houses," which were protected by large coverings, shielding their occupants from the biting cold. Each home had a heartwarming fire burning tirelessly, providing warmth and comfort to its inhabitants. After some sledding, the children gathered at the little café to enjoy a snack prepared and served lovingly by "grandma" around a sturdy wooden table.



Sorteringsanläggning ▲

The former makeshift sorting center in Ursviken's polluted area has transformed into an exemplary waste management and transformation model. A research hub dedicated to various waste management practices now thrives within this enclosure, proudly guarded by the locals' "grand sphinx." This magnificent viewpoint overlooks the industrial site, providing an unmatched view of the frozen river and its surroundings. Some residents have collaborated to rent a space and establish 3D printing machines that use materials directly sourced from the on-site sorting containers. Here, nothing is discarded, everything is transformed.



De små skjulen ▲

As the snow melts in spring, the river slowly fills with small aquatic creatures, bringing joy to residents and visitors who relish long fishing sessions and delightful sauna experiences. This privileged place is a favorite gathering spot for families and friends, with a collection of small cabins reminiscent of the fishing villages once found along the riverside. In Ursviken, inhabitants reconnect with their history and embrace nature's harmony. Time seems to stand still, bringing immense joy to both young and old alike.

