

ET032 Generative Care

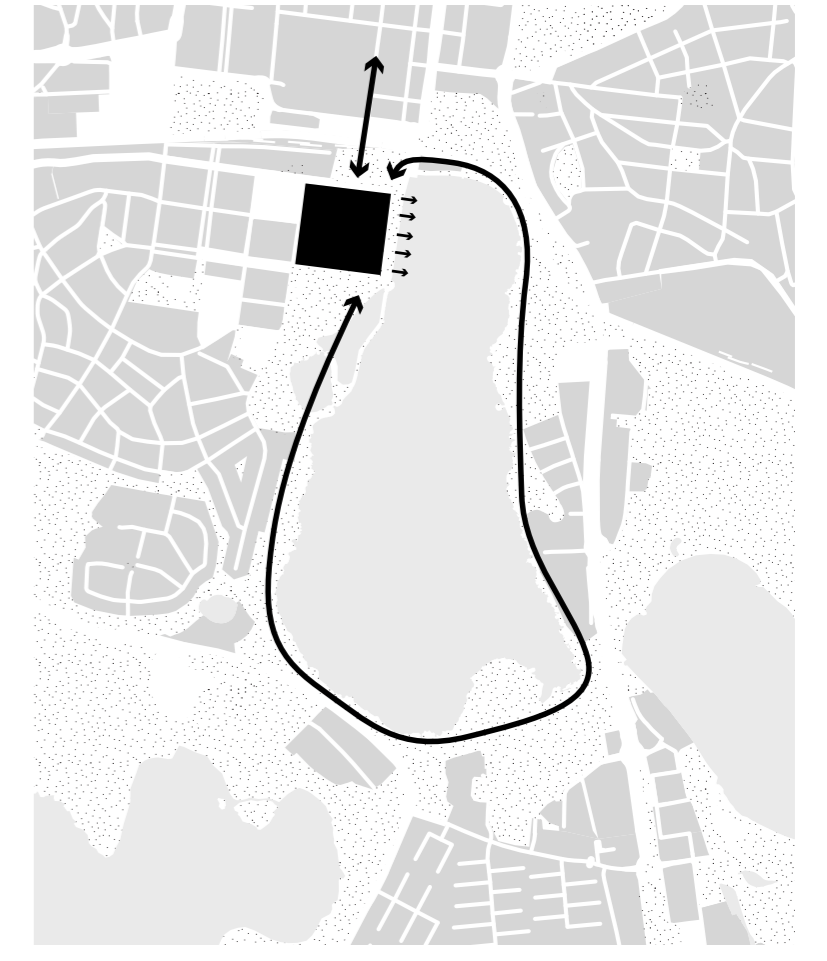
Unlocking the true potential of Centrallasrettet of Växjö has been the driving force behind Generative Care's two-phase intervention. Phase One has involved keeping the hospital operational while implementing three interventions to spark dialogue with citizens about the area's future, explore the value of existing structures, and envision new uses for them. Building on the insights gained, Phase Two will focus on a large-scale transformation of the existing structures, reusing materials, adding elements, and restructuring streets to breathe new life into the area.

To make informed decisions and consider the current economic situation, time and citizen engagement have been prioritized. While some experts advocate building a new hospital outside the city, the patient and thoughtful approach has allowed for a deeper understanding of the possibilities, ensuring the right choices are made for the community's benefit.

Växjö's historical position surrounded by forests, and its role as the metropole of the region, inspire the vision for the hospital area. The integration of the old hospital will reconnect it to the city and its natural surroundings, fostering a harmonious whole. By embracing a collective practice and encouraging citizen involvement, the transformation becomes a collaborative effort, creating a dynamic and organic urban development.

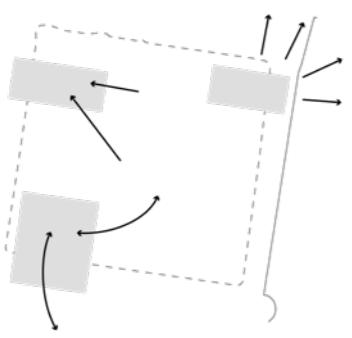
The revitalized area will reinvigorate Växjö's connection to the green belt and the lake, enhancing the public space for everyone's enjoyment. Taking care of the existing hospital is an opportunity for Växjö to lead the way in urbanism, reinforcing its status as "Europe's greenest city" while considering economic and social perspectives. This endeavor not only has the potential to become a national attraction but also provides a new framework for the local community to thrive.

■ Existing
■ Phase 01
■ Phase 02
■ Demolition



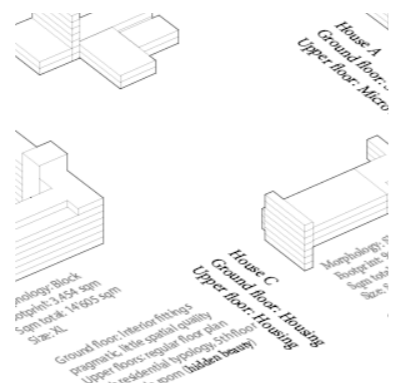
Reacting to the City

Strategically positioned in three corners of the hospital site, three poles are activating and opening up the area towards the city. By creating direct connections with the park and the bustling path along the water, they serve as vital links, engaging citizens in envisioning the future development of the old hospital.



A Pathology of the Existing

Detailed studies of the existing structures reveal their material potential and versatility. The building's fundamental "hardware" and façade qualities offer opportunities for diverse interventions and new uses. This work has just begun and will further evolve with Phase One's activities.



Typologies of Transformation

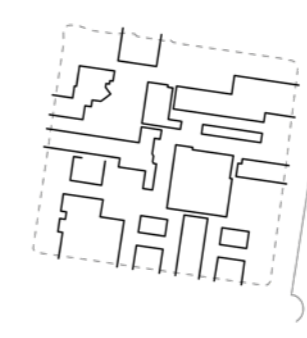
While the site boasts a diverse range of buildings, they can be categorized into typologies that are apt for various rehabilitations.

■ Block
■ Massive
■ Slab
■ Additions / Solitaire
■ Small / Low



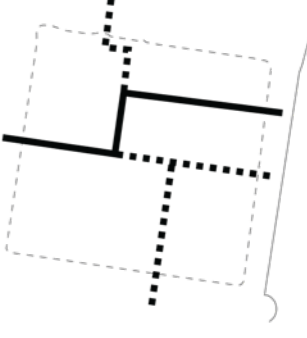
Variety Between the Buildings

Appreciating the richness of the outdoor spaces between existing buildings, a public realm on the ground floor is opening up the area. This design approach acknowledges different scales and positions, creating a new strong identity firmly rooted in the site's existing essence.



Opening Up

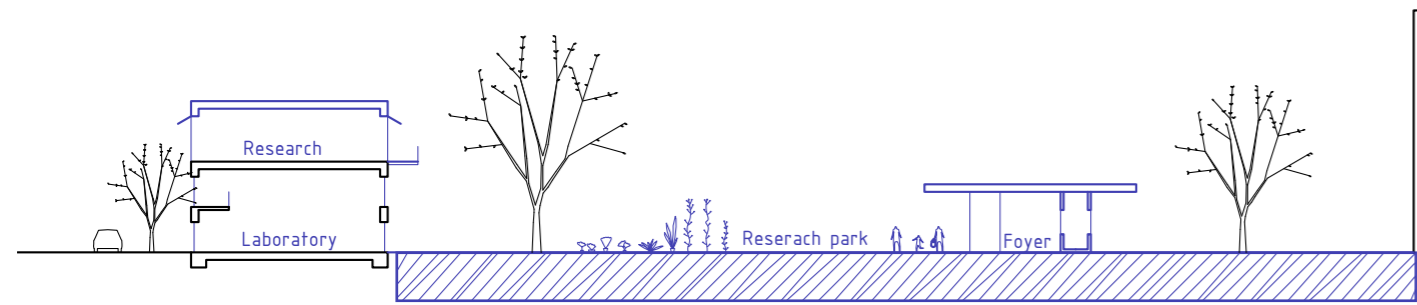
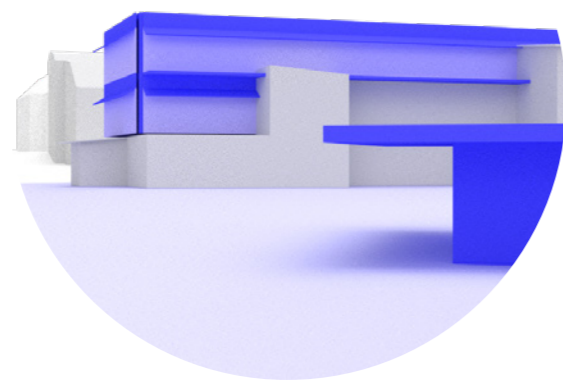
Introducing additional entrances for cars and pedestrians (dotted line) seamlessly integrates the urban block of the hospital into the city fabric, fostering more activities. Its golden location by the lake and with this new dynamic framework, fully capitalizing on its potential to become a place of strong identity and influence of Växjö.



(C) Research of Landscape

Recreating natural soil on a former car park, the pole for Research of Landscape provides a space for professionals and the public to meet and explore new possibilities in the site's natural domain. Open to the park Strandbjörket, ongoing research and solutions are showcased, creating an environment of collaborative creation. Building Q is repositioned to create a double-ceiling laboratory space, while the current program is moved to a new extension on the roof, also housing offices for landscape researchers. (section 1:500)

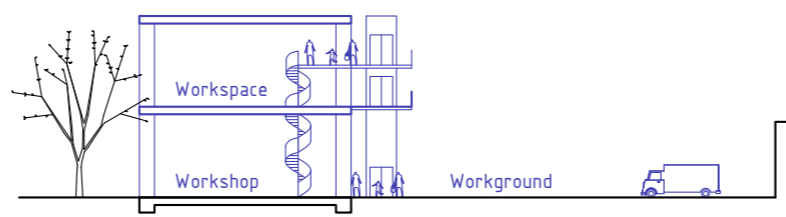
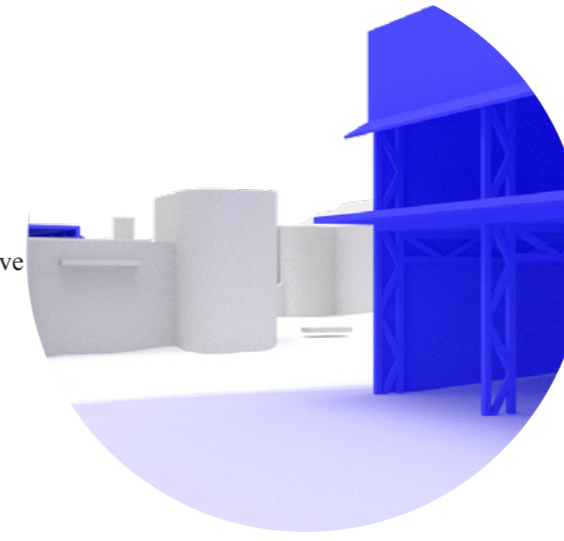
Spaces before renovation 1300 sqm
New use in the existing 750 sqm
New constructions 550 sqm



(B) Research of Reuse

The pole for Research of Reuse, with direct access to the street and a spacious courtyard, optimizes the structure of an existing garage in building M. Two floors of generous workshop spaces, high ceilings, and open spans offer versatile potential for various uses. Utilizing materials found on-site, offices for different research activities are installed on mezzanines, fostering a collaborative and creative environment. (section 1:500)

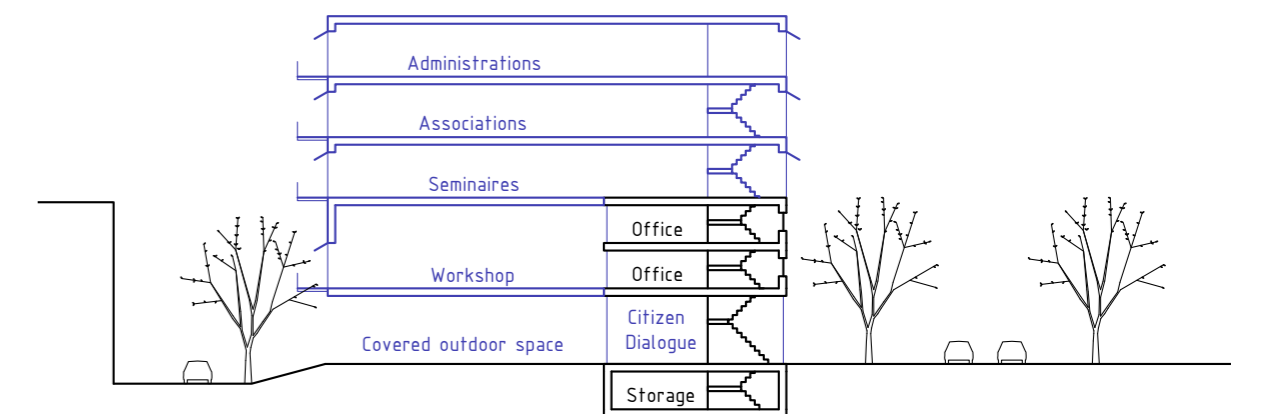
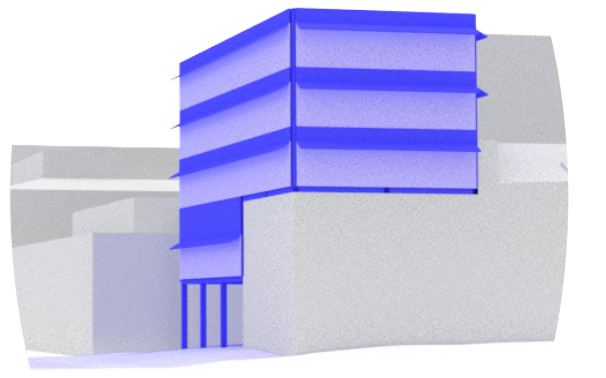
Spaces before renovation 430 sqm
New use in the existing 430 sqm
New constructions 430 sqm



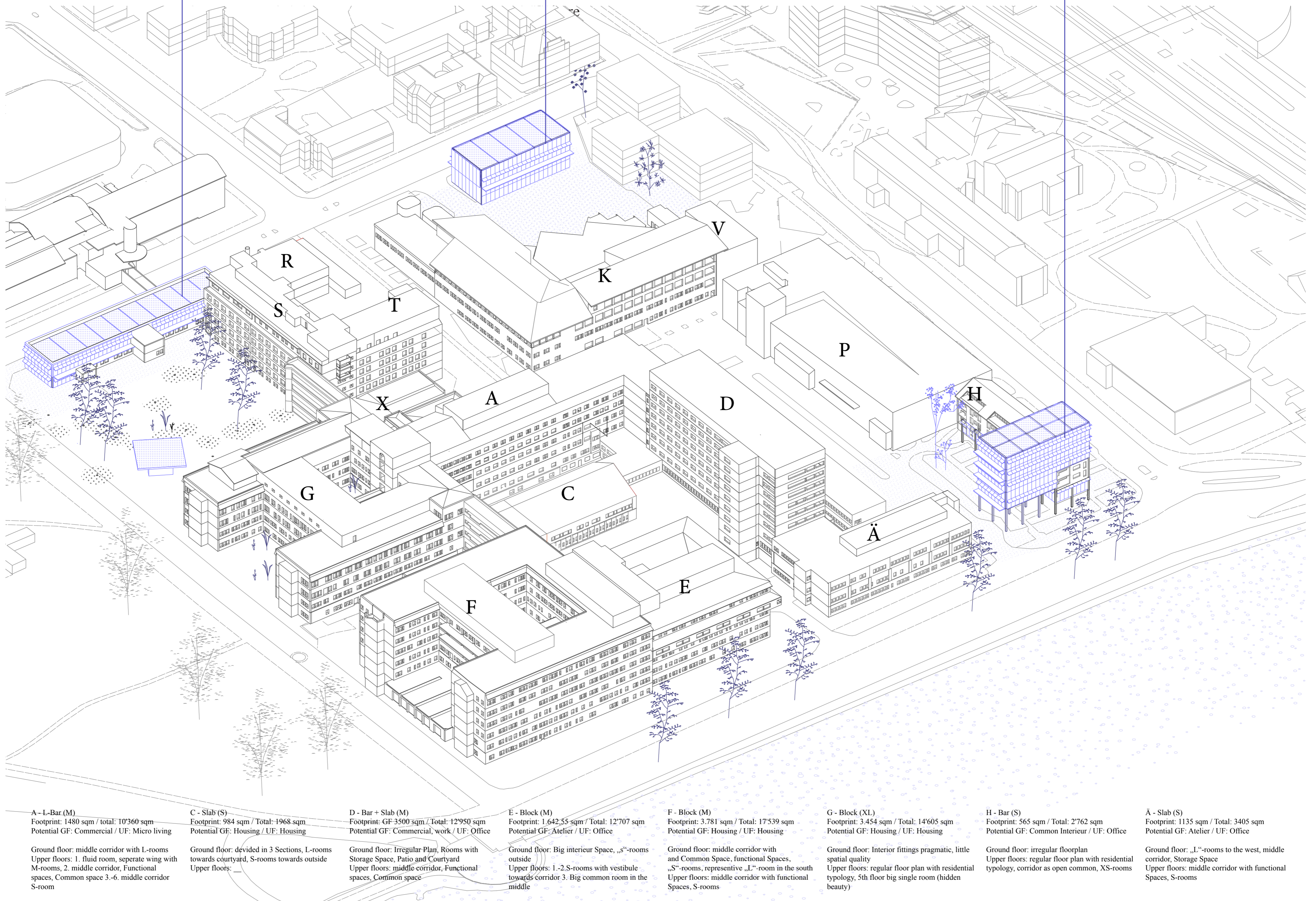
(A) Culture and Citizen Dialogue

In the corner facing the lake and the center of Växjö, the Culture and Citizen Dialogue pole is established, combining both a new building and the existing structure. The ground floor opens up to the street, creating a small square within the site and invites visitors to the upper floors of spaces for seminars and workshops. This new point of reference becomes the hospital's welcoming entrance, anchoring future development and empowering citizens to influence its outcome. (section 1:500)

Spaces before renovation 840 sqm
New use in the existing 560 sqm
New constructions 1300 sqm



Phase 01



<p>A - Bar (M) Footprint: 1480 sqm / total: 10'360 sqm Potential GF: Commercial / UF: Micro living</p> <p>Ground floor: middle corridor with L-rooms Upper floors: 1. fluid room, separate wing with M-rooms, 2. middle corridor, Functional spaces, Common space 3-6. middle corridor S-room</p>	<p>C - Slab (S) Footprint: 984 sqm / Total: 1968 sqm Potential GF: Housing / UF: Housing</p> <p>Ground floor: divided in 3 Sections, L-rooms towards courtyard, S-rooms towards outside Upper floors:</p>	<p>D - Bar + Slab (M) Footprint: 1 642,55 sqm / Total: 12'950 sqm Potential GF: Commercial, work / UF: Office</p> <p>Ground floor: Irregular Plan, Rooms with Storage Space, Patio and Courtyard Upper floors: middle corridor, Functional spaces, Common space</p>	<p>E - Block (M) Footprint: 1 642,55 sqm / Total: 12'707 sqm Potential GF: Atelier / UF: Office</p> <p>Ground floor: Big interior Space, „S“-rooms outside Upper floors: 1.-2.S-rooms with vestibule towards corridor, 3. Big common room in the middle</p>	<p>F - Block (M) Footprint: 3 781 sqm / Total: 17'539 sqm Potential GF: Housing / UF: Housing</p> <p>Ground floor: middle corridor with and Common Space, functional Spaces, „S“-rooms, representative „L“-room in the south Upper floors: middle corridor with functional Spaces, S-rooms</p>	<p>G - Block (XL) Footprint: 3 454 sqm / Total: 14'605 sqm Potential GF: Housing / UF: Housing</p> <p>Ground floor: Interior fittings pragmatic, little spatial quality Upper floors: regular floor plan with residential typology, 5th floor big single room (hidden beauty)</p>	<p>H - Bar (S) Footprint: 565 sqm / Total: 2'762 sqm Potential GF: Common Interior / UF: Office</p> <p>Ground floor: irregular floorplan Upper floors: regular floor plan with residential typology, corridor as open common, XS-rooms</p>	<p>Ä - Slab (S) Footprint: 1135 sqm / Total: 3405 sqm Potential GF: Atelier / UF: Office</p> <p>Ground floor: „L“-rooms to the west, middle corridor, Storage Space Upper floors: middle corridor with functional Spaces, S-rooms</p>
--	--	--	--	---	--	---	--