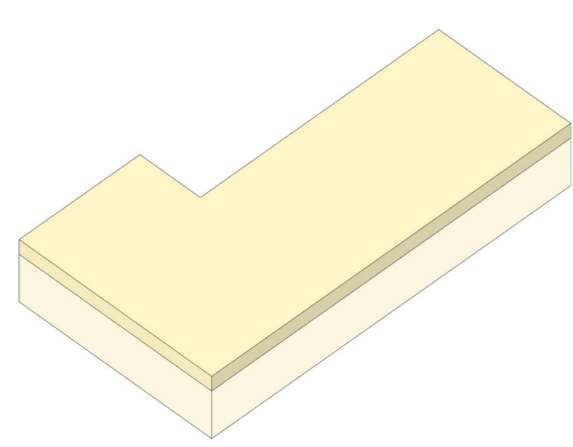


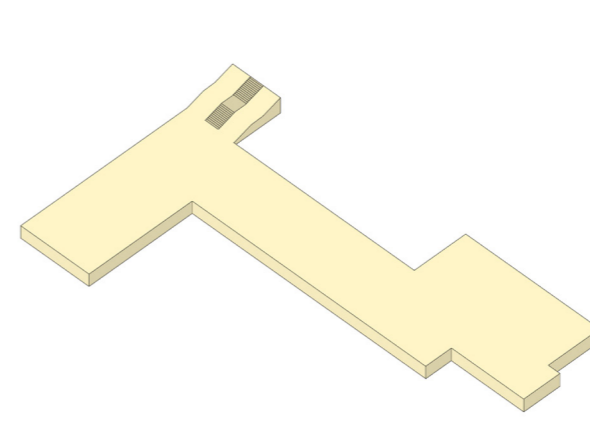
**CULTURE HOUSE**  
12 000 m<sup>2</sup> GFA

The Culture House is a versatile venue that houses art exhibitions, congresses, a restaurant, café, children's library, concerts, theater and a culture and language centre. By placing public functions on the ground floor, Strandvägen is strengthened as a public and lively place facing Växjösjön. The rooftop is available for events, such as outdoor cinema viewings and concerts.



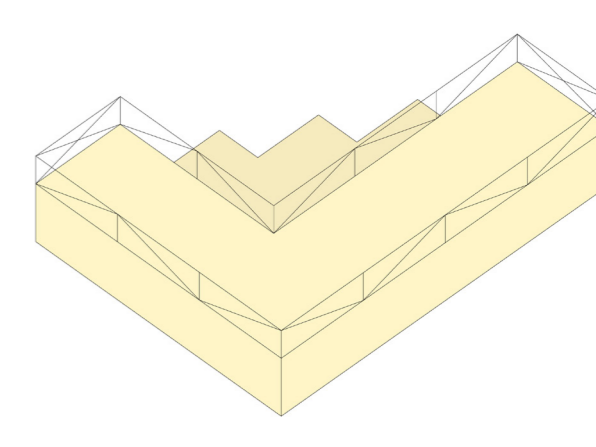
**MARKET HALL**  
1 000 m<sup>2</sup> GFA

The market hall offers a place for local craft tradition and food culture, with restaurants and a trading point for locally produced foods. The roof terrace is nicely embedded in its surroundings, among the treetops of Strandvägen in the direction of the lake. The ground floor of the sales hall faces the lake promenade, while the park and square can host activities such as the farmer's market and food festivals.



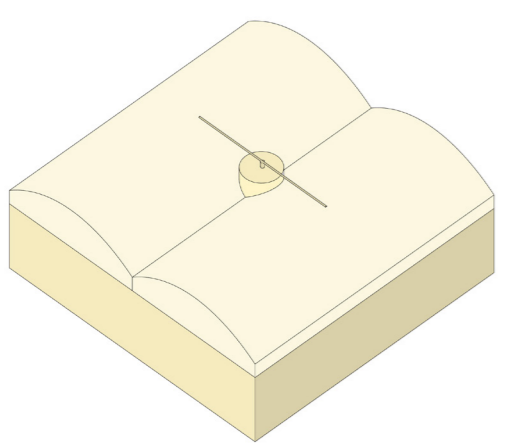
**URBAN SQUARE**  
7 000 m<sup>2</sup> GFA

The urban square is a vibrant, lively place that lends itself well to various events. With plenty of space for markets, pop-up shops and other temporary activities, which coincide with activity linked to surrounding workshops, shops, cafes and restaurants.



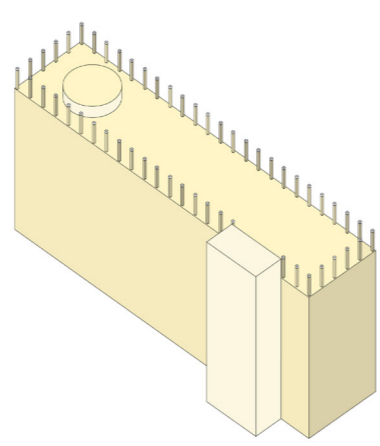
**HEALTH CENTER**  
10 700 m<sup>2</sup> GFA

The health center builds on the area's history as a place of health and well-being. There is a gym, pharmacy and clinic here, as well as the opportunity for Linnéuniversitetet to conduct research activities related to sports and health. The rooftop is programmed with an outdoor gym, running track and multi-court for sports activities. The center is strategically directed towards the homes on Söder and towards the station, in proximity of the medical center and infection clinic.



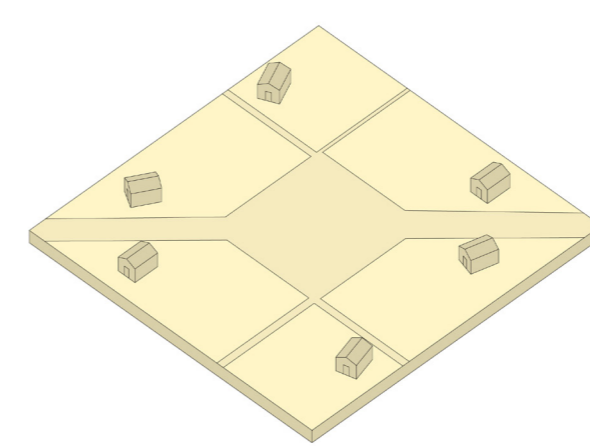
**INNOVATION CENTER**  
2 000 m<sup>2</sup> GFA

The Center for Innovation houses an incubator, museum, exhibitions, café and a platform for community involvement and workshops/trainings on environmental issues and green technology. The rooftop is used for cultivation and greenhouses. The center will be a creative hub in the intersection of art, industry and research, closely connected to Linnéuniversitetet, for a platform that connects knowledge and entrepreneurship, and strengthens Växjö's position as a sustainable city.



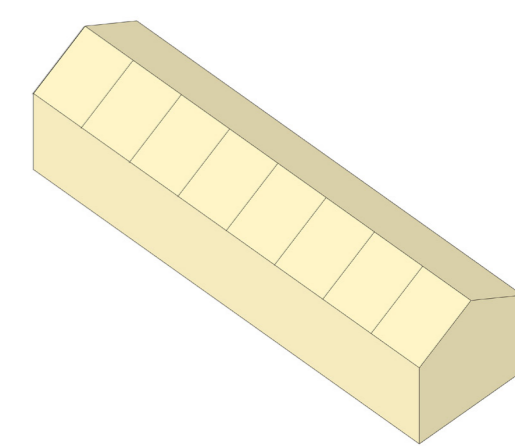
**HOTEL**  
9 600 m<sup>2</sup> GFA

The hotel welcome anyone visiting the region of Småland. In proximity of the central station, it is located in the middle of Vågsjöstaden, in the area's tallest building, with a rooftop restaurant that provides a view over the whole of Växjö. The infirmary's lobby is reused and adapted for hotel operations and is surrounded by a glass-enclosed, double-height breakfast room that also connects to the market hall.



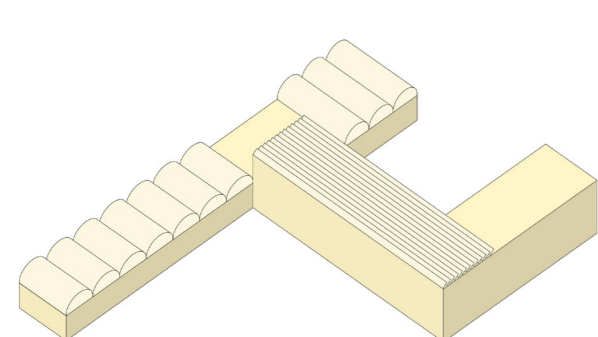
**ALLOTMENTS**  
2 300 m<sup>2</sup> GFA

In the vicinity of apartment buildings and old people's homes, in prime south-facing location, allotments are available for residents and the public. Here, the local small scale farmer enthusiast can grow vegetables and other plants, with help from the Center of Innovation and the Workshop, who both offers support and the possibility to borrow tools for cultivation.



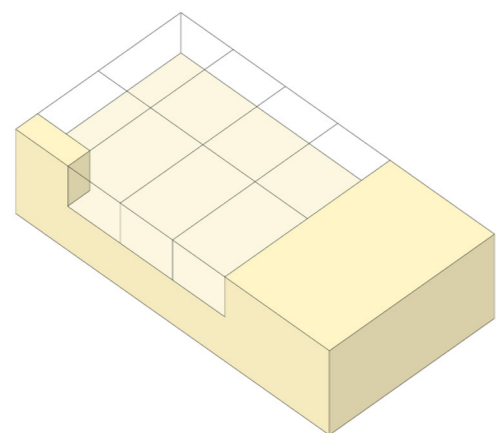
**ATELIERS**  
1 800 m<sup>2</sup> GFA

The studios are located in the north, near the workshop, and offers space for artists and creative industries, providing facilities for both production and exhibitions, as well as temporary residences for scholarship holders to live and work during a specified time. The studios strengthen Växjö's identity as a *creative city in the heart of the kingdom of glass and wood*.



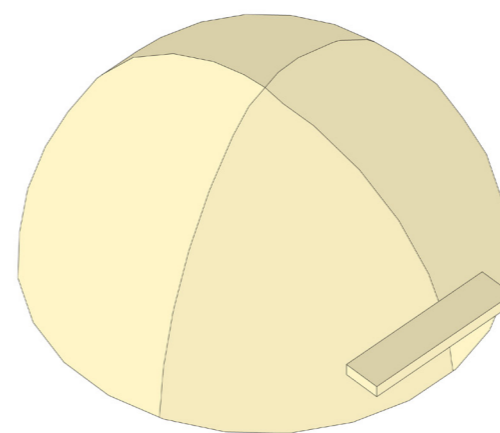
**ECO-LIVING**  
9 800 m<sup>2</sup> GFA

In connection with the park in the south-western corner, the current children's nursery is being built together with the buildings along Vårendsgatan into a multi-generational residence with integrated environmental solutions for climate and food production. The "eco-housing" offers a way of living that promotes sustainability and community, where different generations can live and learn from each other and socialize through, for example, a collective dining room. On the northern side there is a shaded courtyard providing outdoor spaces for the ground floor pre-school.



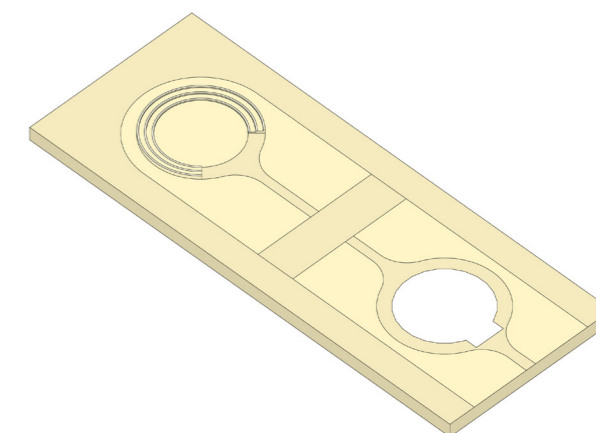
**WORKSHOP**  
6 000 m<sup>2</sup> GFA

The workshop is housed in the former parking garage, transforming the robust concrete structure into a maker space with focus on recycling. Opportunities are offered to rent premises and tools for projects, and the workshop provide spaces for handling and storing materials and building details from hospital demolition. The rooftop is used as a flexible outdoor workshop for larger projects or temporary installations. The workshop is a gathering place that strengthens the city's cultural, sustainable and entrepreneurial spirit.



**THE PAVILION**  
500 m<sup>2</sup> GFA

The pavilion is a central part of the new area, with a garden café and information about the development of the new block, which can be displayed here continuously in parallel with the area taking shape. The pavilion is erected early in the project, preferably at a temporary location in Strandbjörket, until the green landscape of Gläntan is completed, and is used to maintain a dialogue with residents and visitors throughout the life of the project. In this way, the pavilion becomes a clear marker for the area's vision and identity.



**GLÄNTAN PARK**  
8 000 m<sup>2</sup> GFA

The green parkscape of Gläntan creates a new glade that provides Vågsjöstaden with light and air, as well as recreational opportunities and ecosystem services. The public can enjoy the extended green lane connecting the lakeside promenade and the residential areas of Söder. An amphitheater enables open-air cultural activities, gatherings, lectures and events. During winter season, the lowest level of the theater can be used as an ice rink.